



GREFFYTO
— SURFACE LLP —



PUNCH

HEAVY DUTY OUTDOOR TILES

400X400MM



GREFFYTO
— SURFACE LLP —



A GOOD STORY

NEEDS ONLY A GOOD DESIGN

HEAVY DUTY
OUTDOOR TILES

ARTISTIC COLLECTION

Tiles are stain- and slip-resistant, reducing the possibility of mishaps and making cleaning simpler.



GREFFYTO

— SURFACE LLP —



DESIGN THAT

UNITES DECOREATION



FROST
RESISTANCE



ECO
FRIENDLY



ZERO
MAINTENANCE



RESIDENTIA



DURABLE

400X400MM

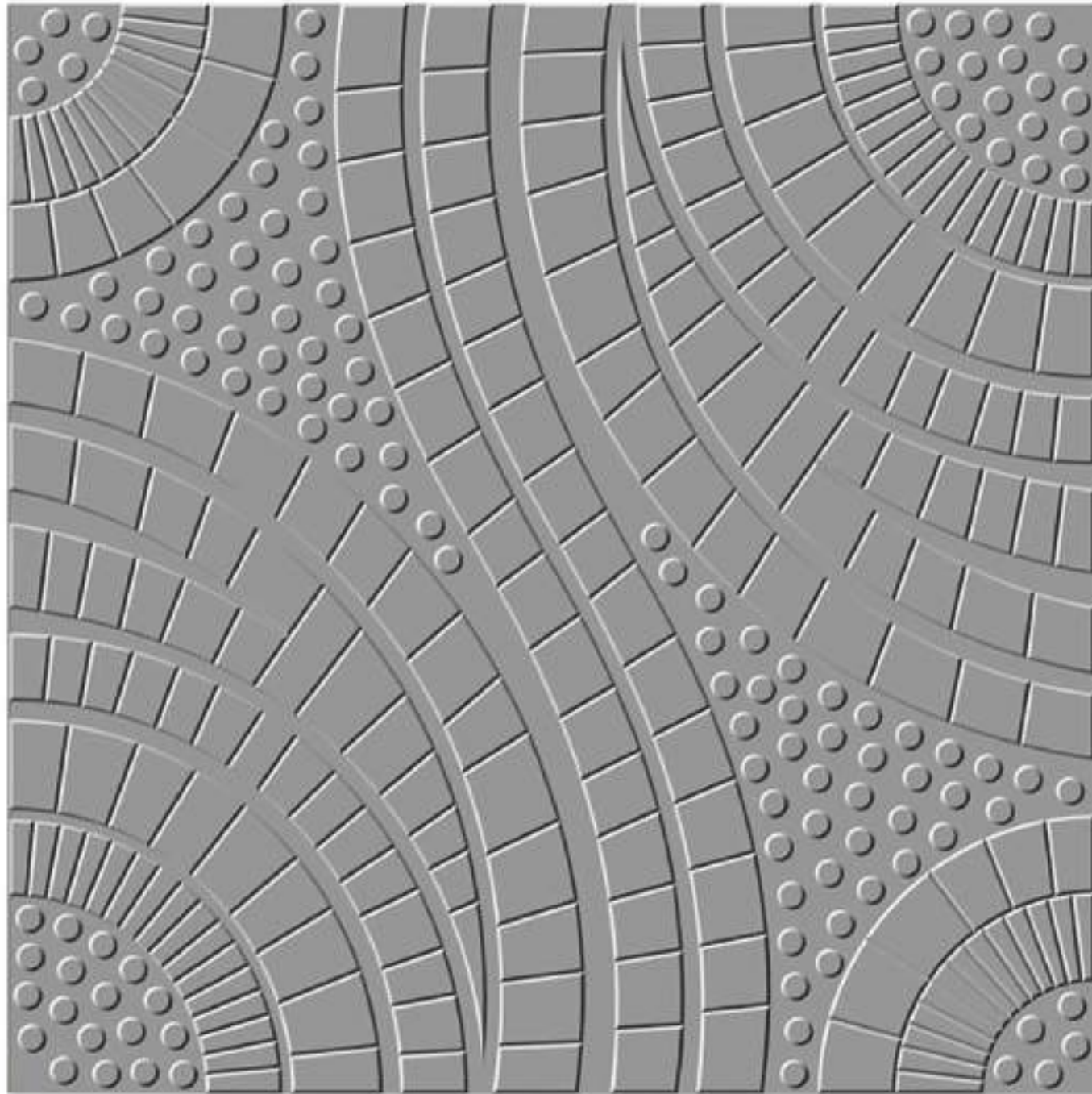
GLEXTONE is a new venture of a diligent group of individuals. Other ventures by the management include successfully running companies. GLEXTONE specialist in parking tiles.

www.greffytosurface.com

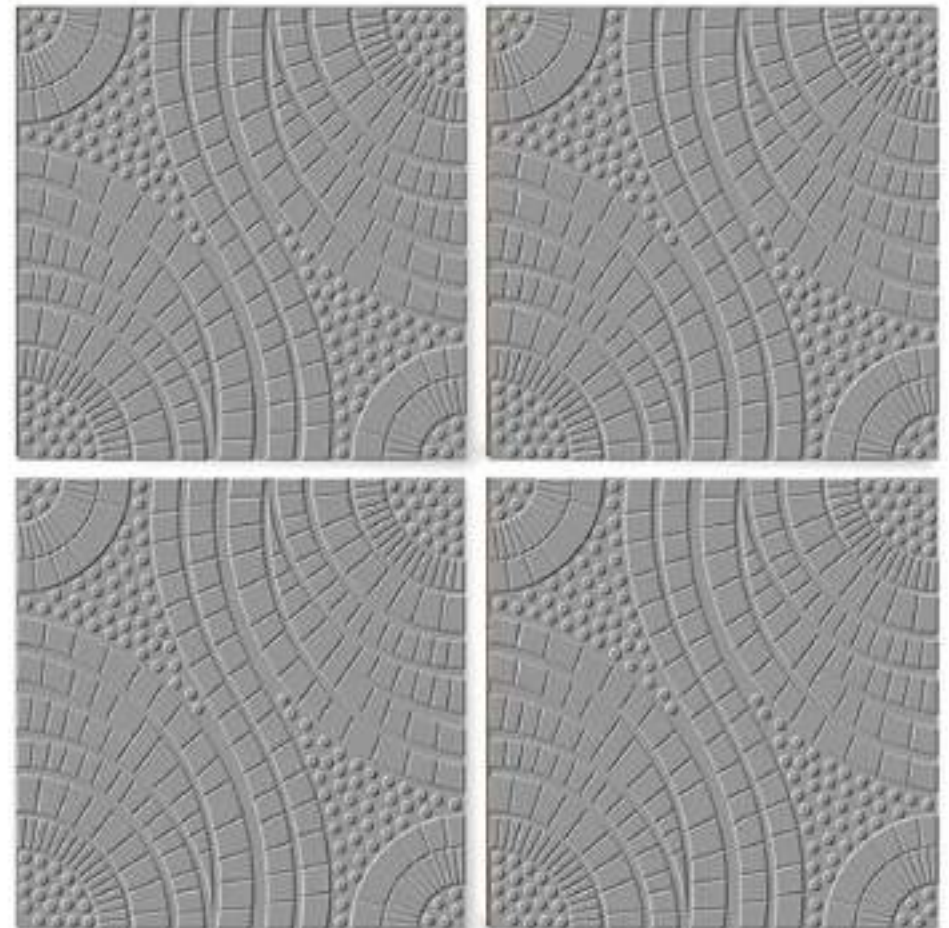


GREFFYTO

— SURFACE LLP —



Size	Finish	Thickness	Random
<u>400x400 mm</u>	<u>Matt</u>	<u>12 mm</u>	<u>1</u>



Applications



Residential Commercial Malls & Restaurants Public Area



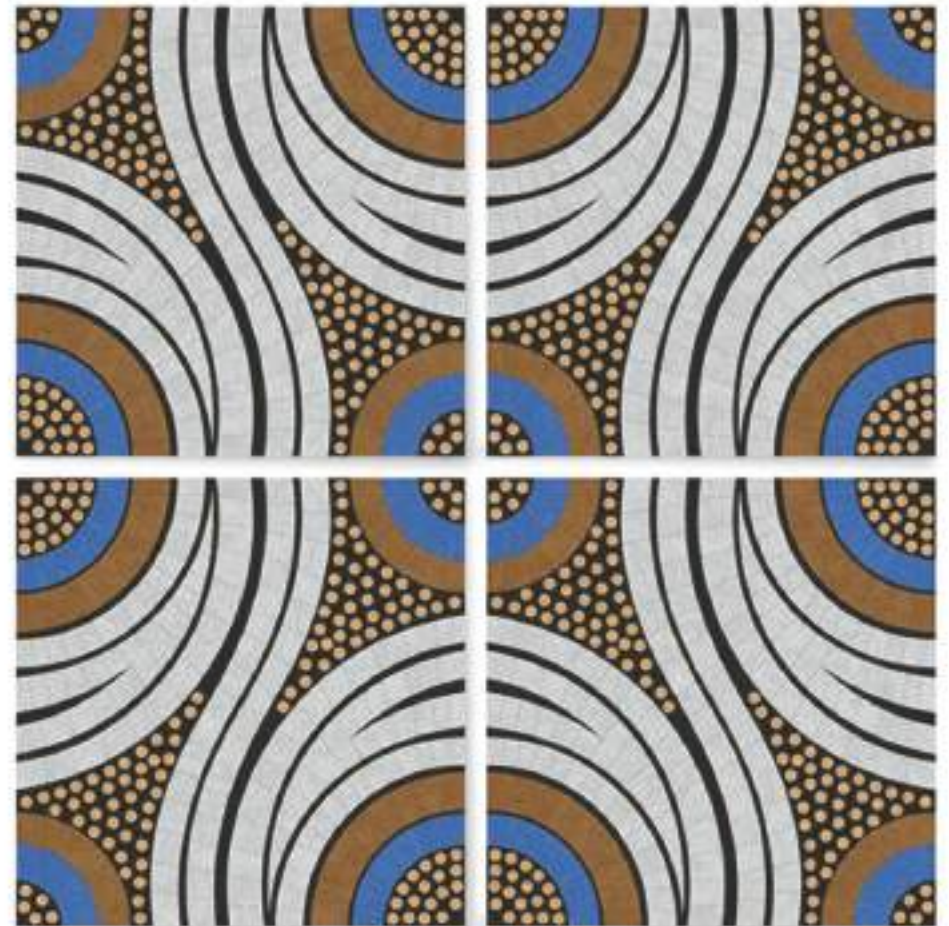
GREFFYTO

— SURFACE LLP —



1901

Size	Finish	Thickness	Random
<u>400x400 mm</u>	<u>Matt</u>	<u>12 mm</u>	<u>1</u>



Applications



Residential



Commercial



Malls & Restaurants



Public Area





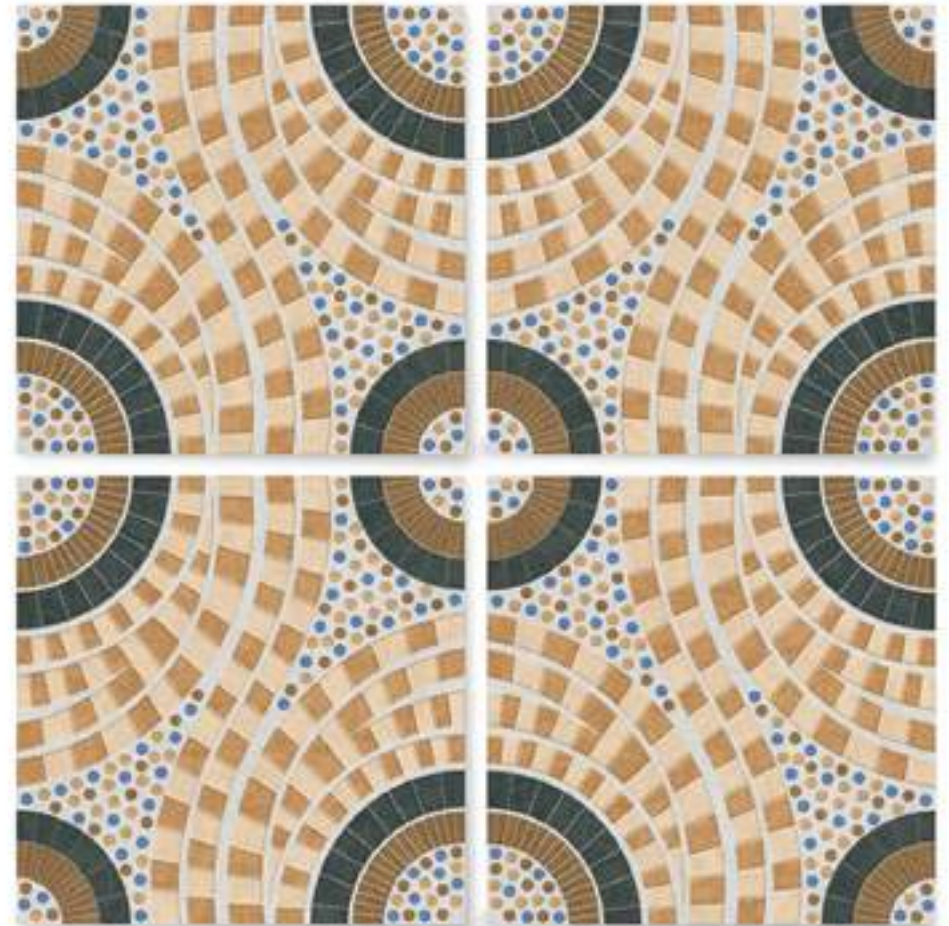
GREFFYTO

— SURFACE LLP —



1902

Size	Finish	Thickness	Random
<u>400x400 mm</u>	<u>Matt</u>	<u>12 mm</u>	<u>1</u>



Applications



Residence



Commercial



Malls & Restaurants



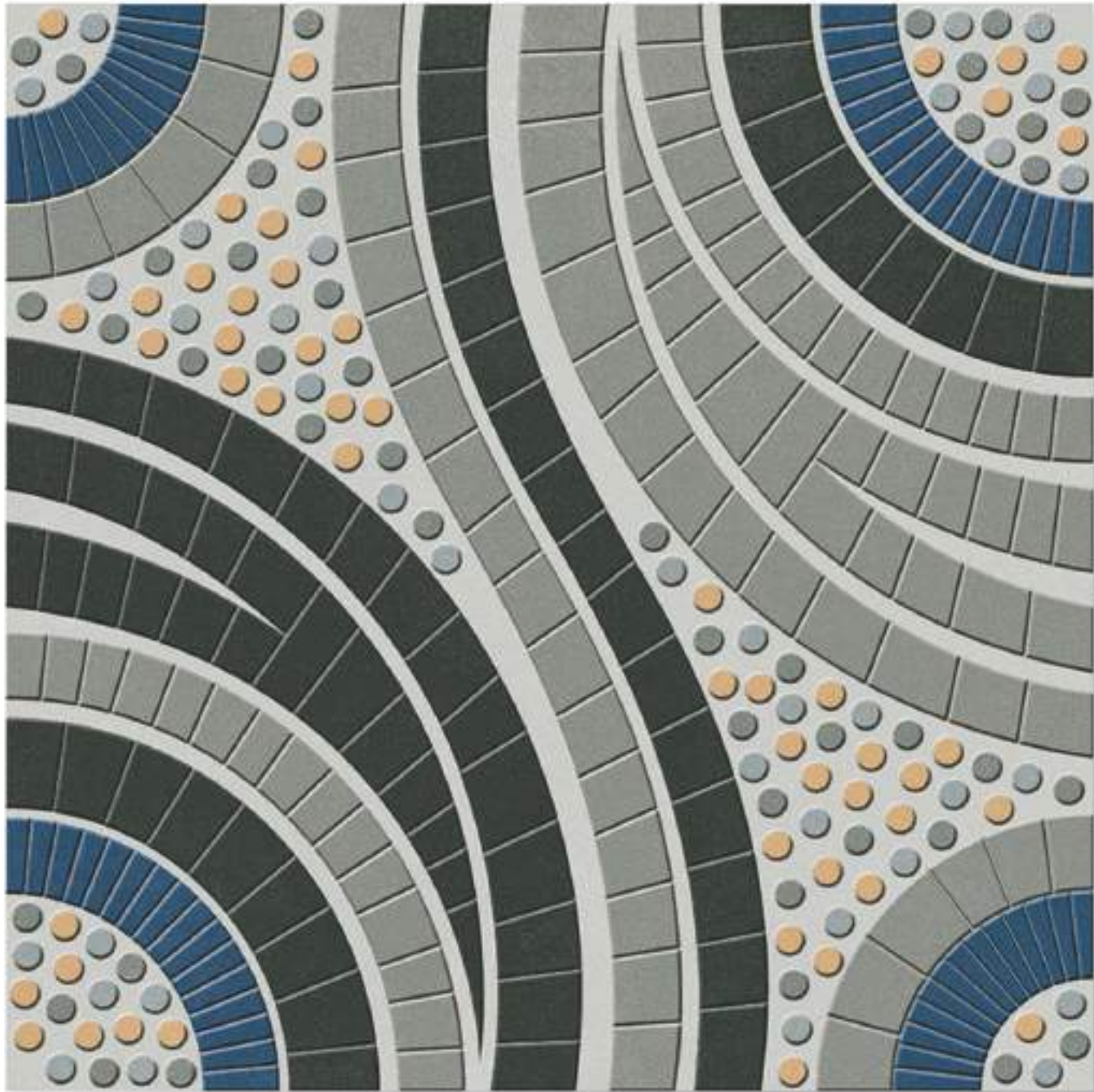
Public Area





GREFFYTO

— SURFACE LLP —



1903

Size	Finish	Thickness	Random
<u>400x400 mm</u>	<u>Matt</u>	<u>12 mm</u>	<u>1</u>



Applications



Residential



Commercial



Malls & Restaurants



Public Area





GREFFYTO

— SURFACE LLP —



1904

Size	Finish	Thickness	Random
<u>400x400 mm</u>	<u>Matt</u>	<u>12 mm</u>	<u>1</u>



Applications

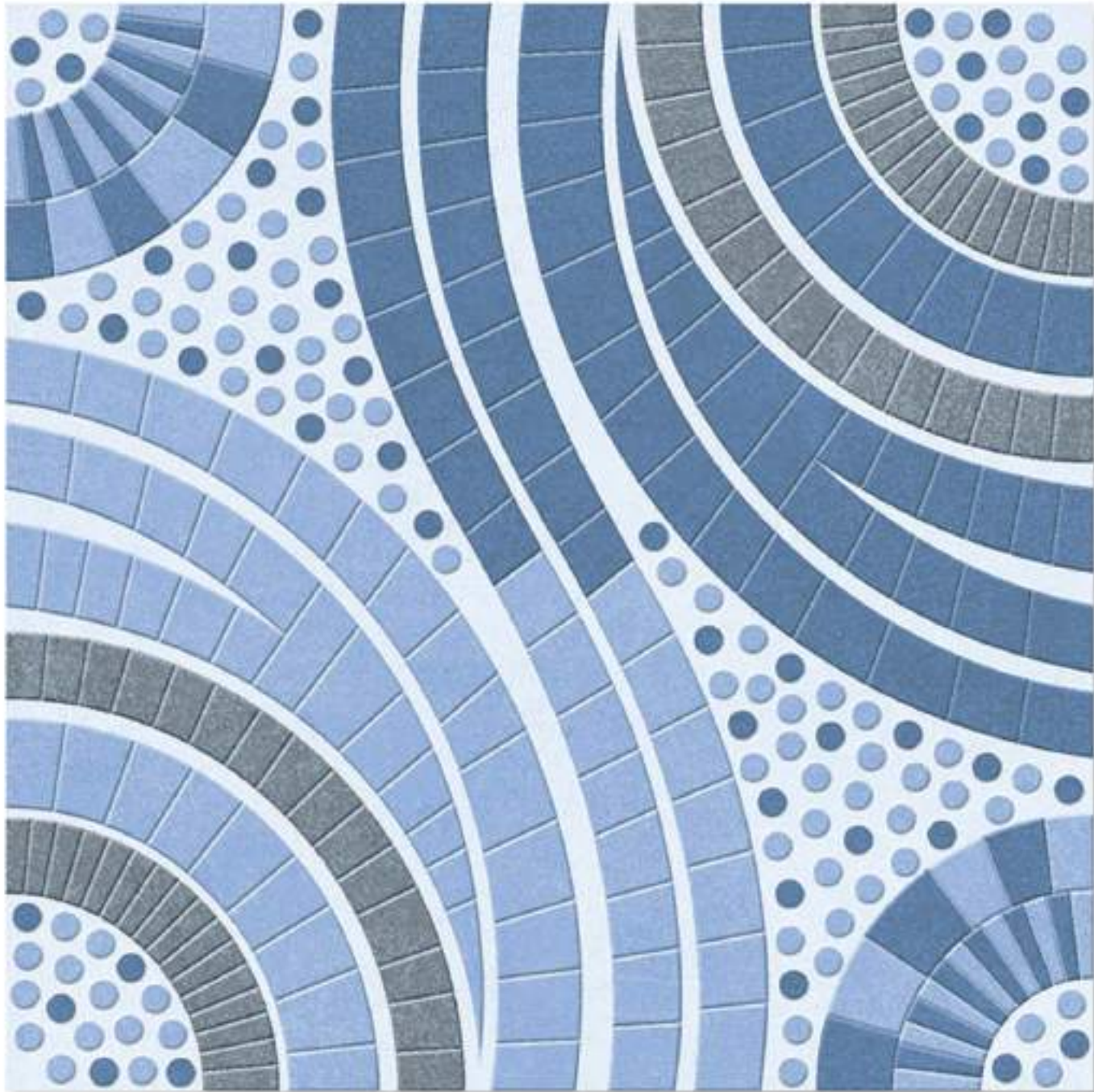
-  Residence
-  Commercial
-  Malls & Restaurants
-  Public Area





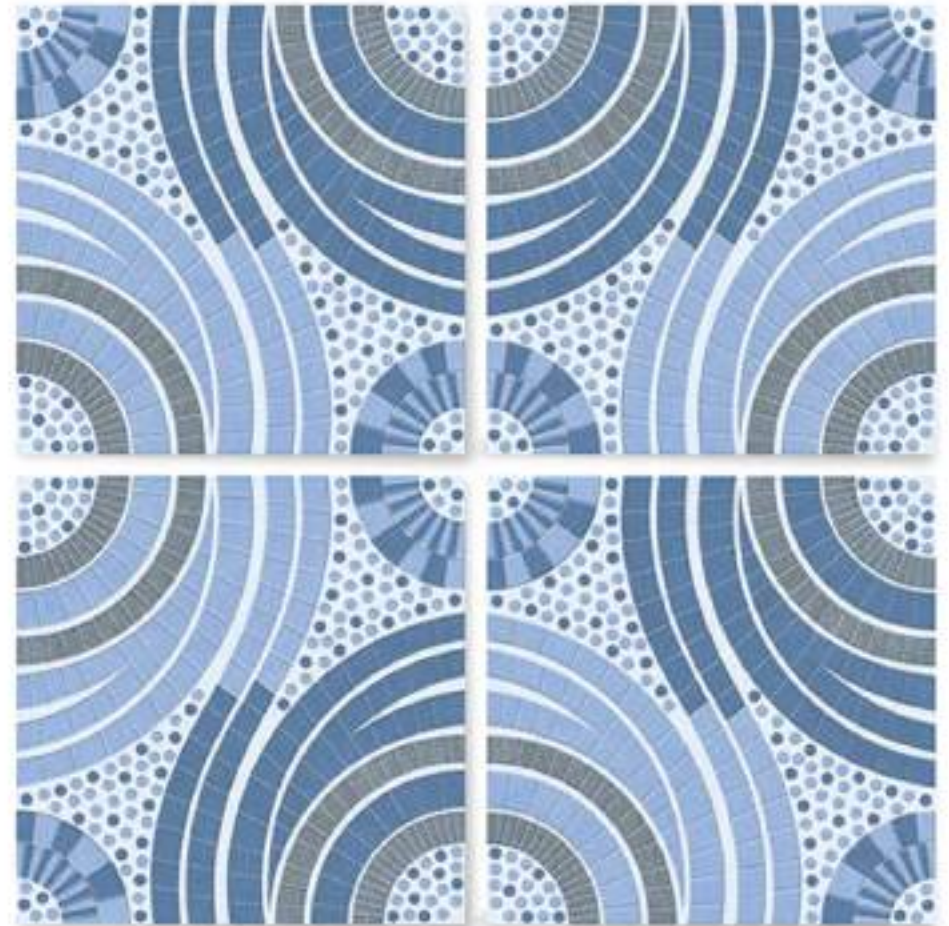
GREFFYTO

— SURFACE LLP —



1905

Size	Finish	Thickness	Random
<u>400x400 mm</u>	<u>Matt</u>	<u>12 mm</u>	<u>1</u>



Applications



Residential



Commercial



Malls & Restaurants



Public Area





GREFFYTO

— SURFACE LLP —



1906

Size	Finish	Thickness	Random
<u>400x400 mm</u>	<u>Matt</u>	<u>12 mm</u>	<u>1</u>



Applications



Residential



Commercial



Malls & Restaurants



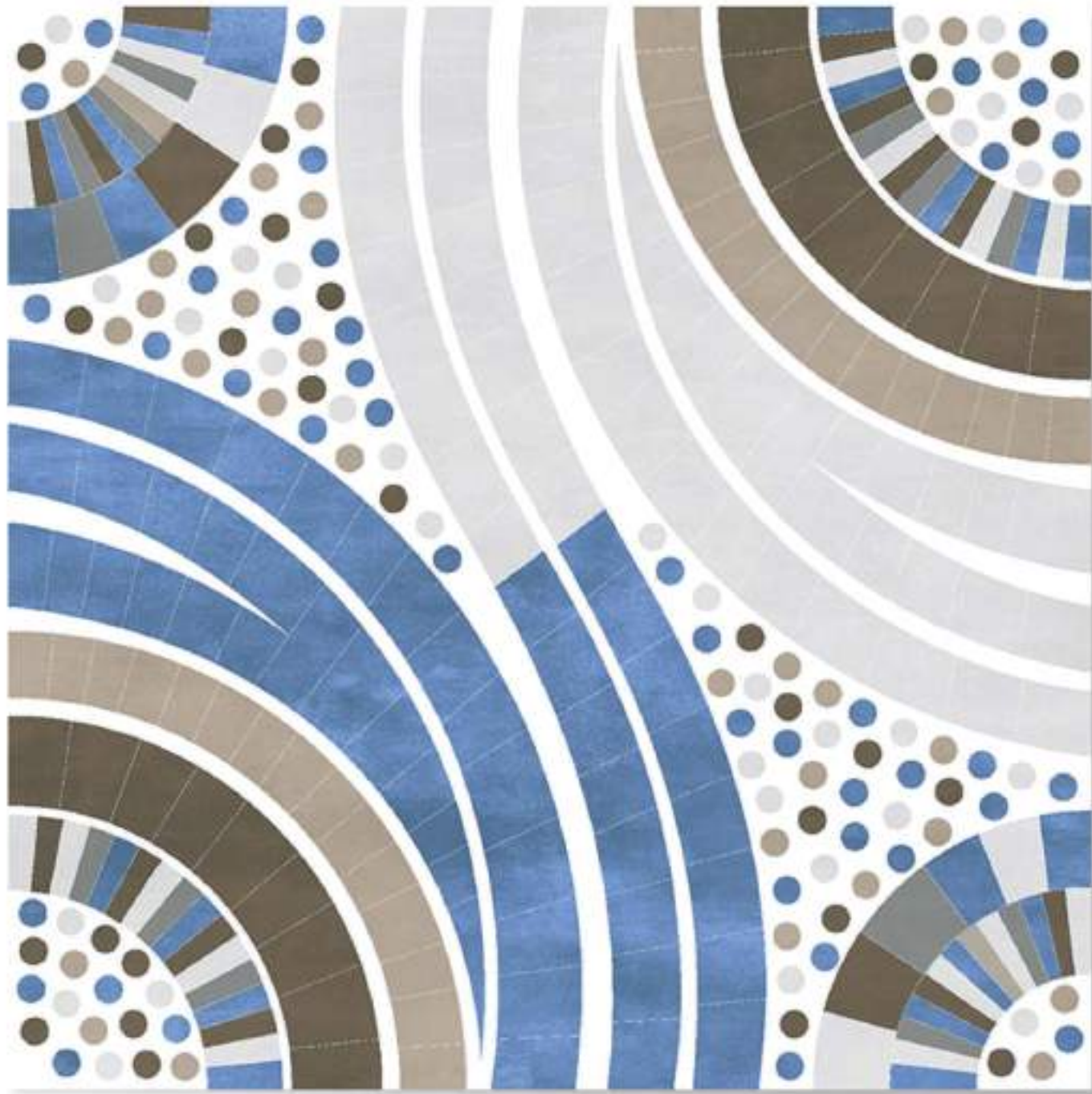
Public Area





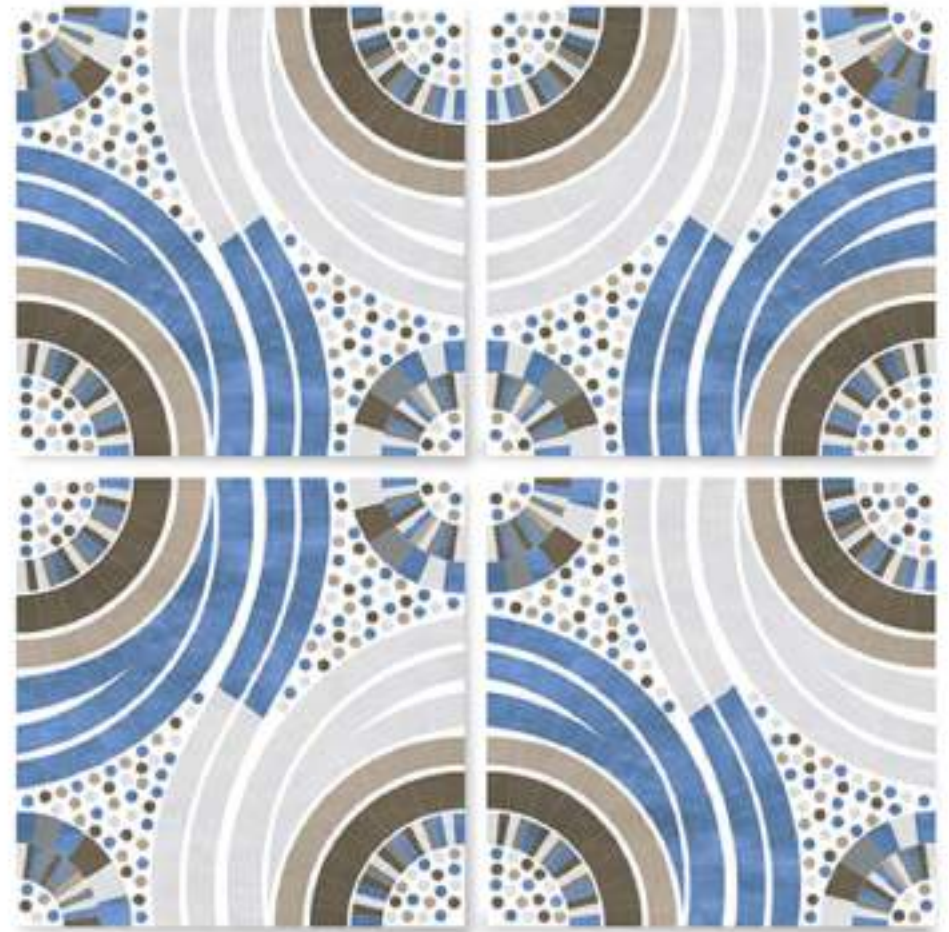
GREFFYTO

— SURFACE LLP —



1912

Size	Finish	Thickness	Random
<u>400x400</u> mm	<u>Matt</u>	<u>12</u> mm	<u>1</u>



Applications



Residential



Commercial



Malls & Restaurants

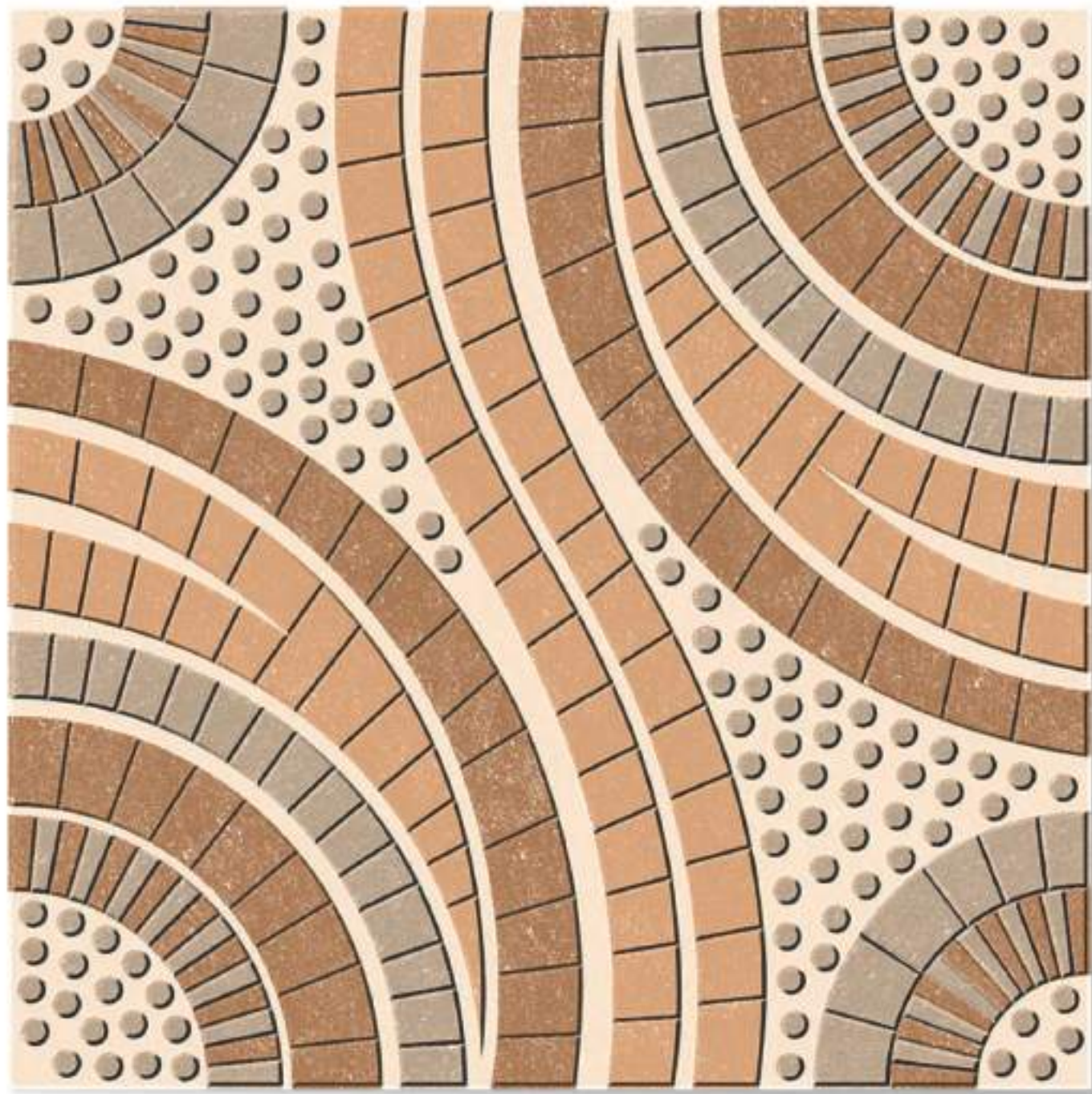


Public Area





GREFFYTO
— SURFACE LLP —



1914

Size	Finish	Thickness	Random
<u>400x400 mm</u>	<u>Matt</u>	<u>12 mm</u>	<u>1</u>



Applications

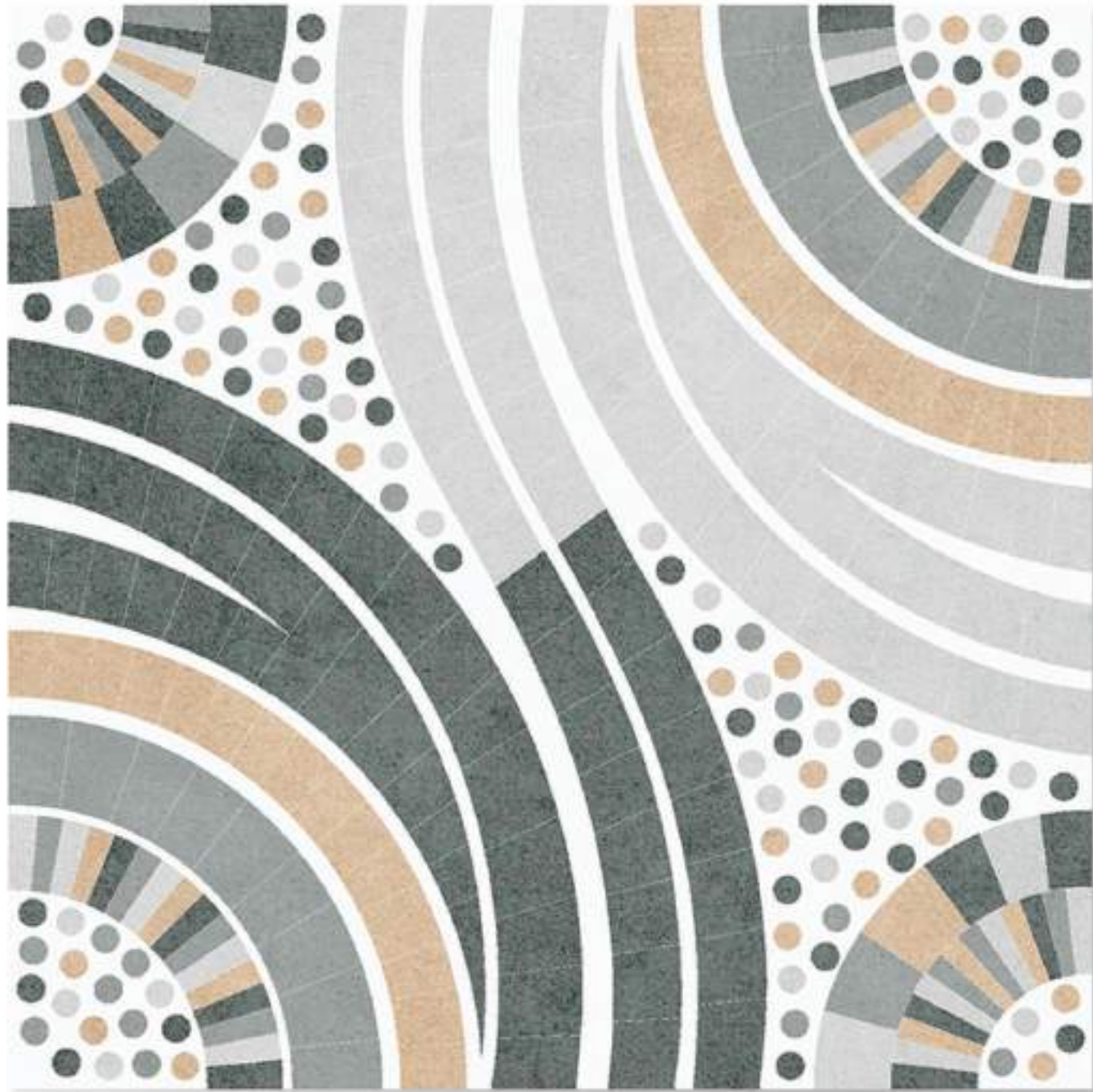
-  Residential
-  Commercial
-  Mats & Restaurants
-  Public Area





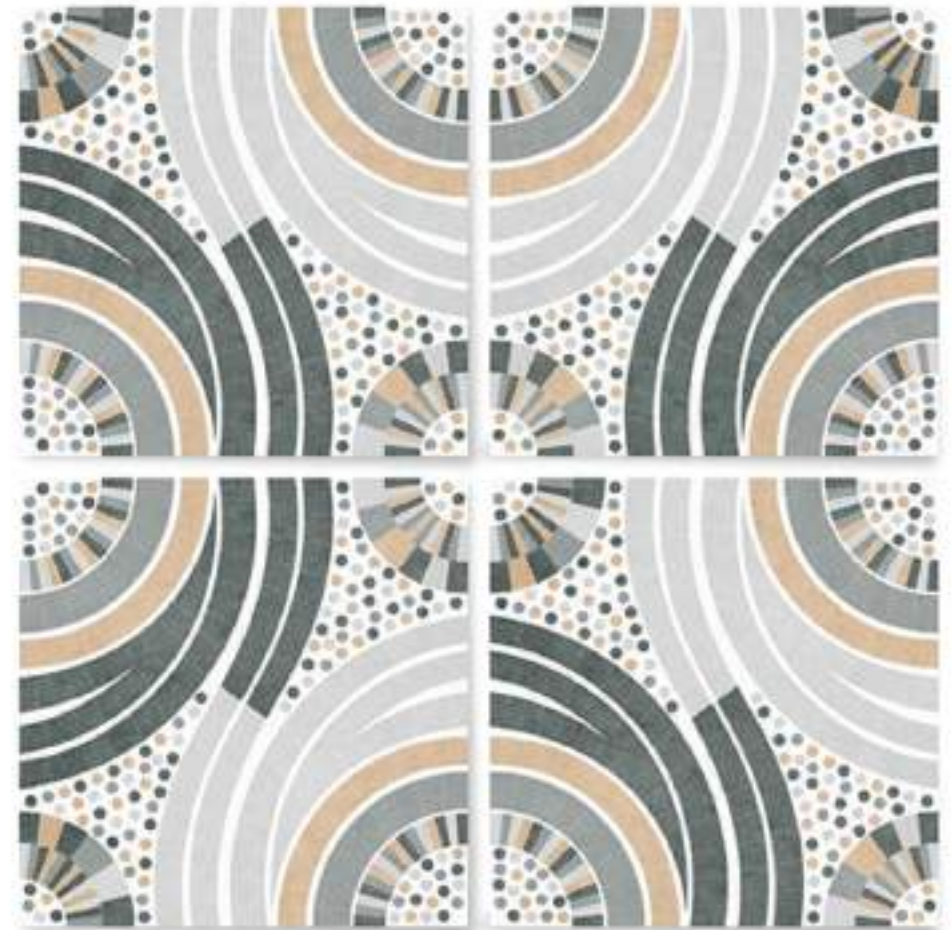
GREFFYTO

— SURFACE LLP —



1915

Size	Finish	Thickness	Random
<u>400x400 mm</u>	<u>Matt</u>	<u>12 mm</u>	<u>1</u>



Applications



Residential



Commercial



Malls & Restaurants



Public Area





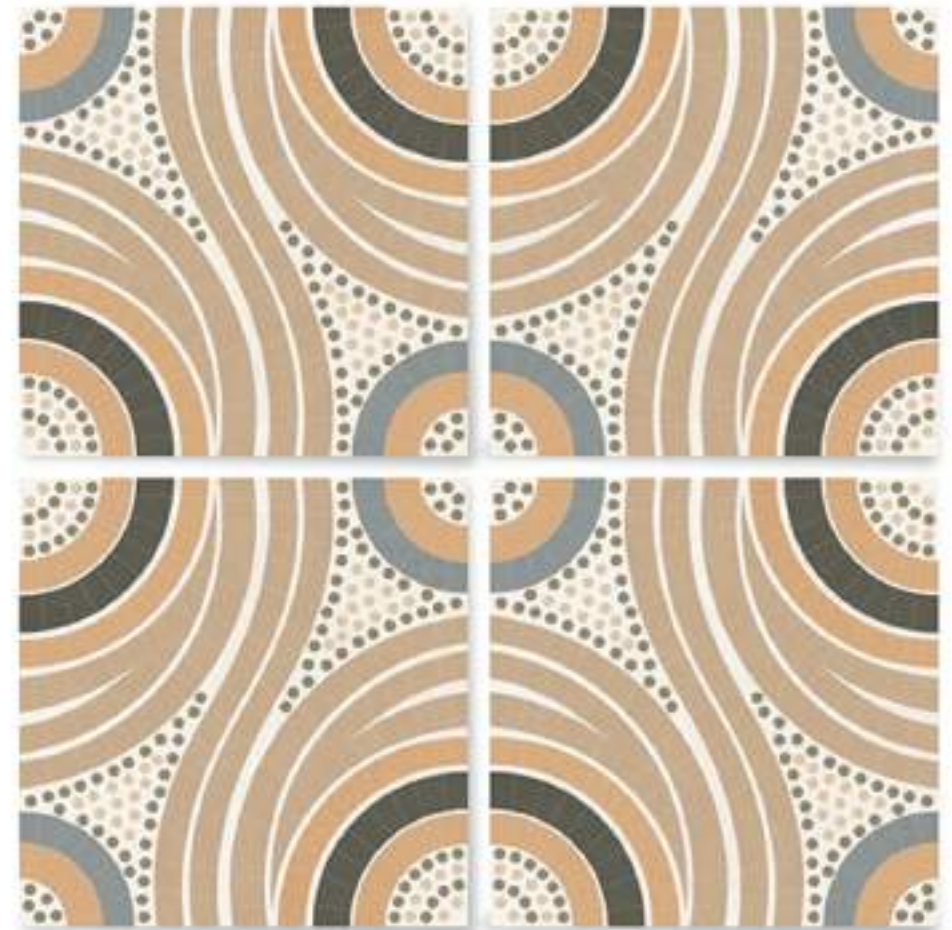
GREFFYTO

— SURFACE LLP —



1918

Size	Finish	Thickness	Random
<u>400x400 mm</u>	<u>Matt</u>	<u>12 mm</u>	<u>1</u>



Applications



Residential



Commercial



Malls &
Restaurants



Public
Area





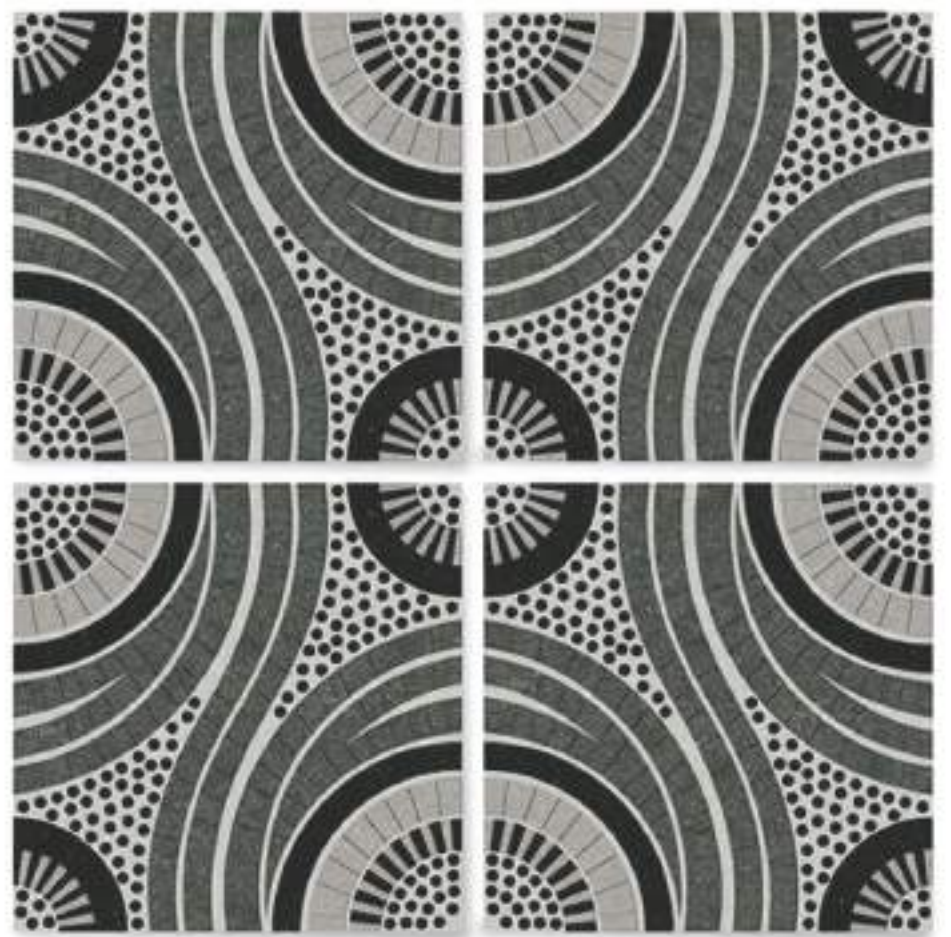
GREFFYTO

— SURFACE LLP —



1919

Size	Finish	Thickness	Random
<u>400x400 mm</u>	<u>Matt</u>	<u>12 mm</u>	<u>1</u>



Applications



Residence Commercial Malls & Restaurants Public Area





GREFFYTO

— SURFACE LLP —



1921

Size	Finish	Thickness	Random
<u>400x400 mm</u>	<u>Matt</u>	<u>12 mm</u>	<u>1</u>



Applications



Residential



Commercial



Malls &
Restaurants



Public
Area





GREFFYTO

— SURFACE LLP —



1922

Size	Finish	Thickness	Random
<u>400x400 mm</u>	<u>Matt</u>	<u>12 mm</u>	<u>1</u>



Applications

-  Residence
-  Commercial
-  Malls & Restaurants
-  Public Area





GREFFYTO

— SURFACE LLP —



1923

Size	Finish	Thickness	Random
<u>400x400</u> mm	<u>Matt</u>	<u>12</u> mm	<u>1</u>



Applications

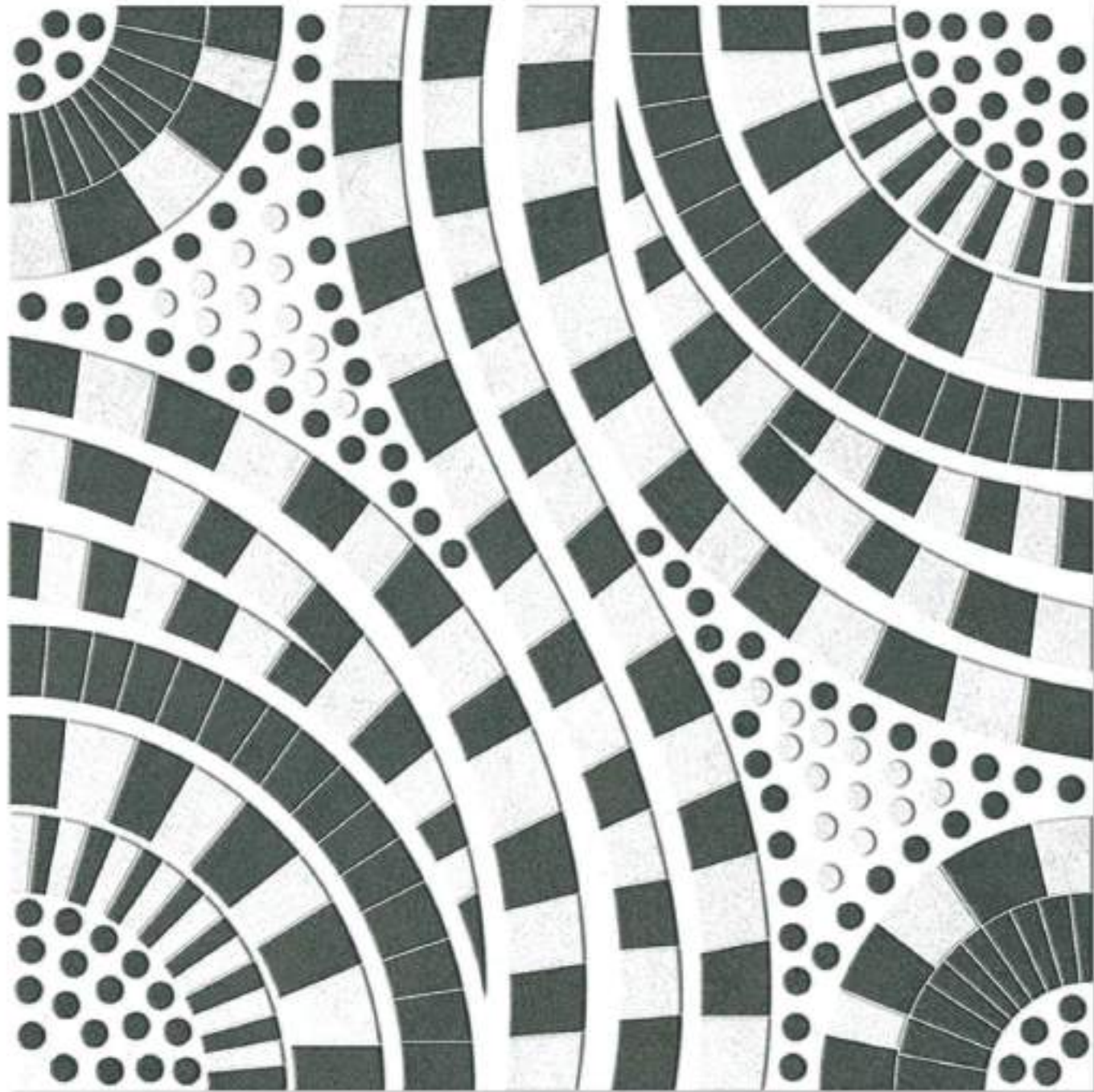
-  Residence
-  Commercial
-  Malls & Restaurants
-  Public Area





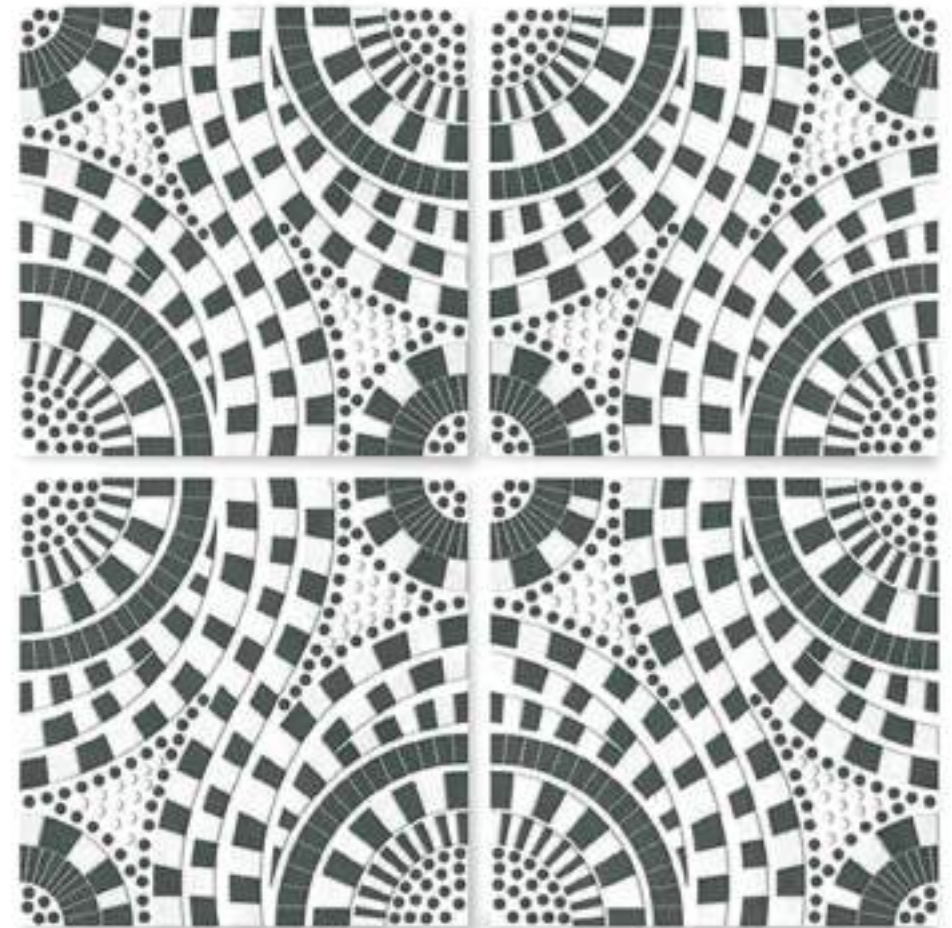
GREFFYTO

— SURFACE LLP —



59006

Size	Finish	Thickness	Random
<u>400x400 mm</u>	<u>Matt</u>	<u>12 mm</u>	<u>1</u>



Applications



Residential



Commercial



Malls & Restaurants



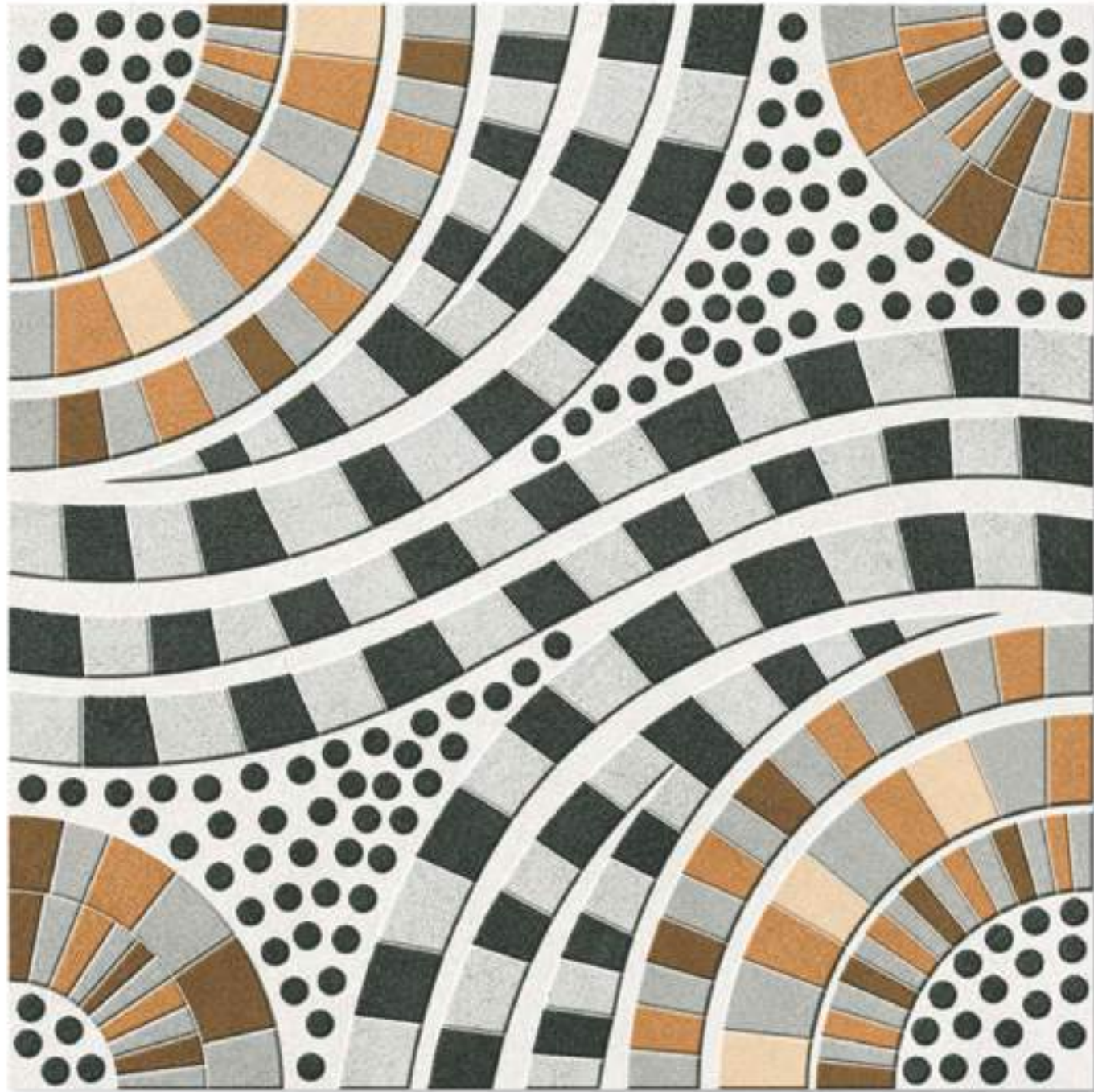
Public Area





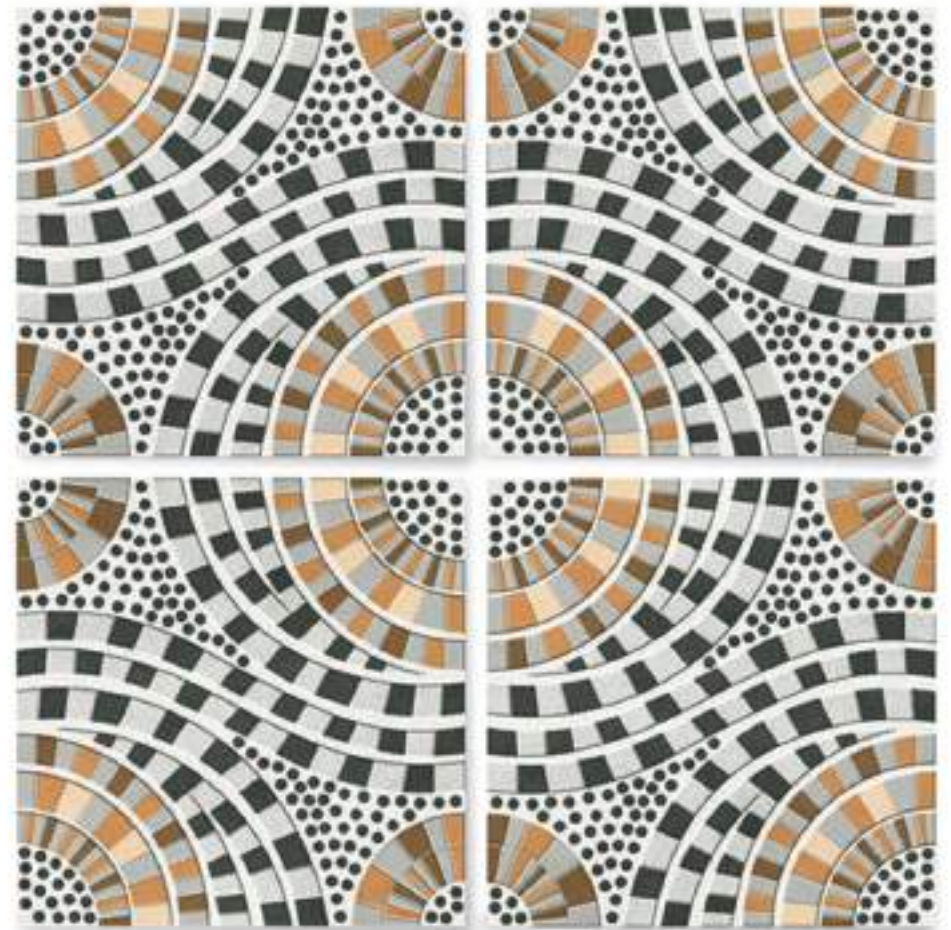
GREFFYTO

— SURFACE LLP —



59008

Size	Finish	Thickness	Random
<u>400x400 mm</u>	<u>Matt</u>	<u>12 mm</u>	<u>1</u>



Applications



Residential



Commercial



Malls & Restaurants



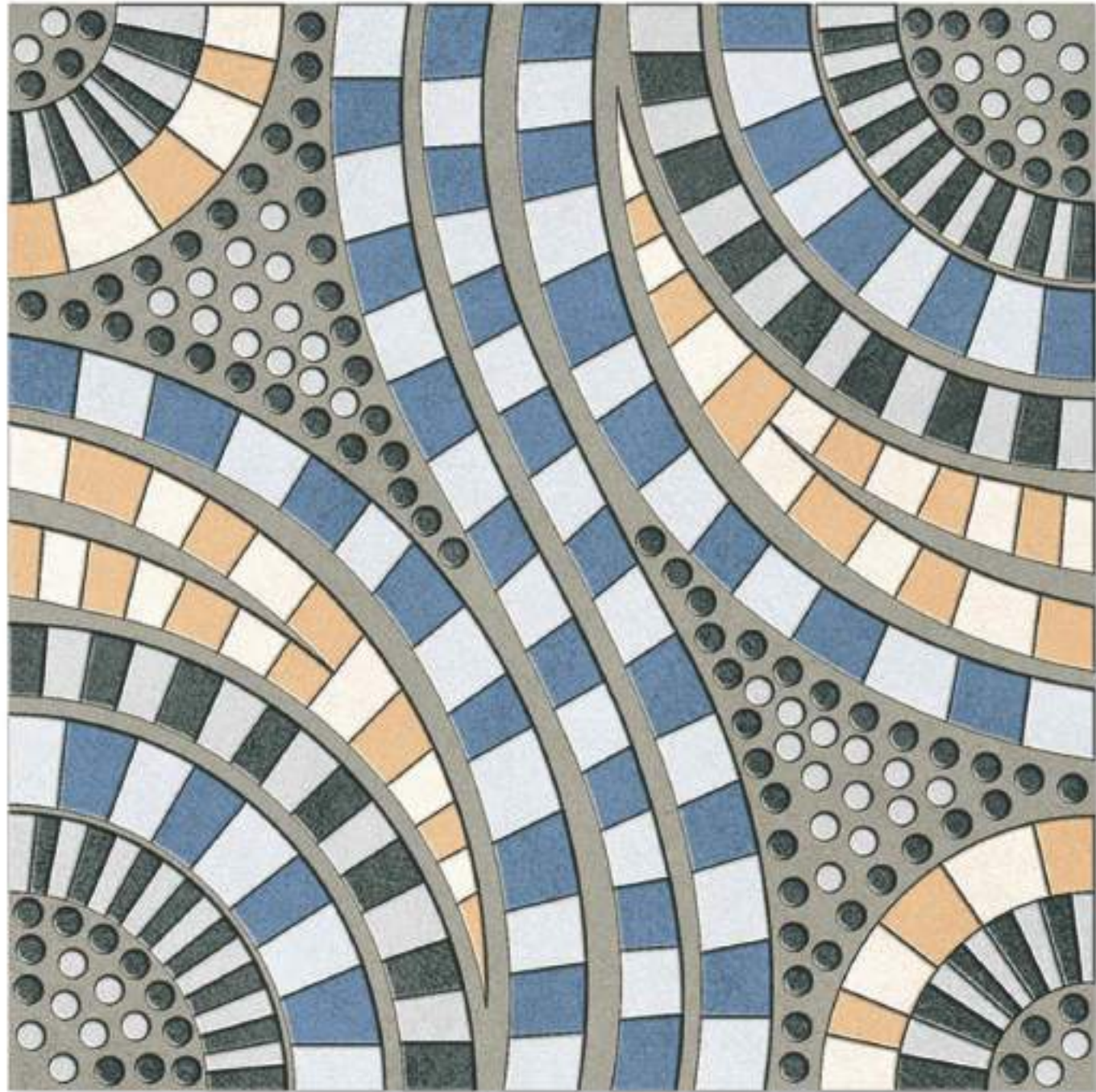
Public Area





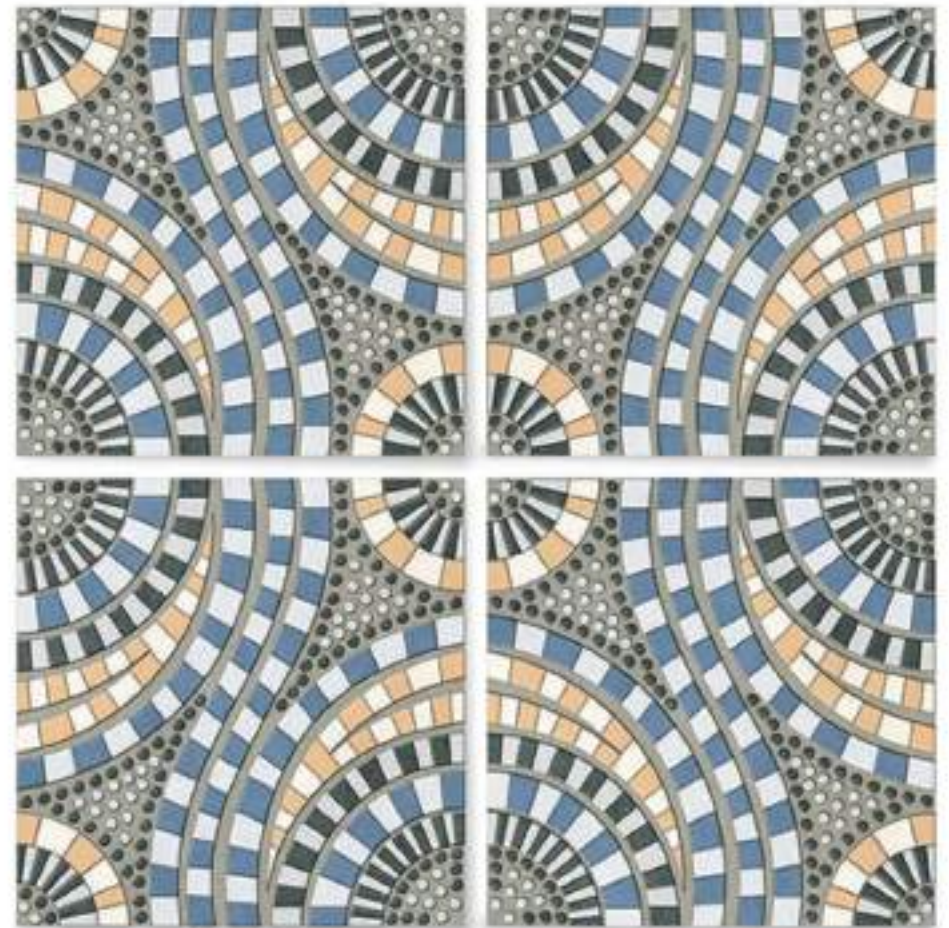
GREFFYTO

— SURFACE LLP —



59010

Size	Finish	Thickness	Random
<u>400x400 mm</u>	<u>Matt</u>	<u>12 mm</u>	<u>1</u>



Applications



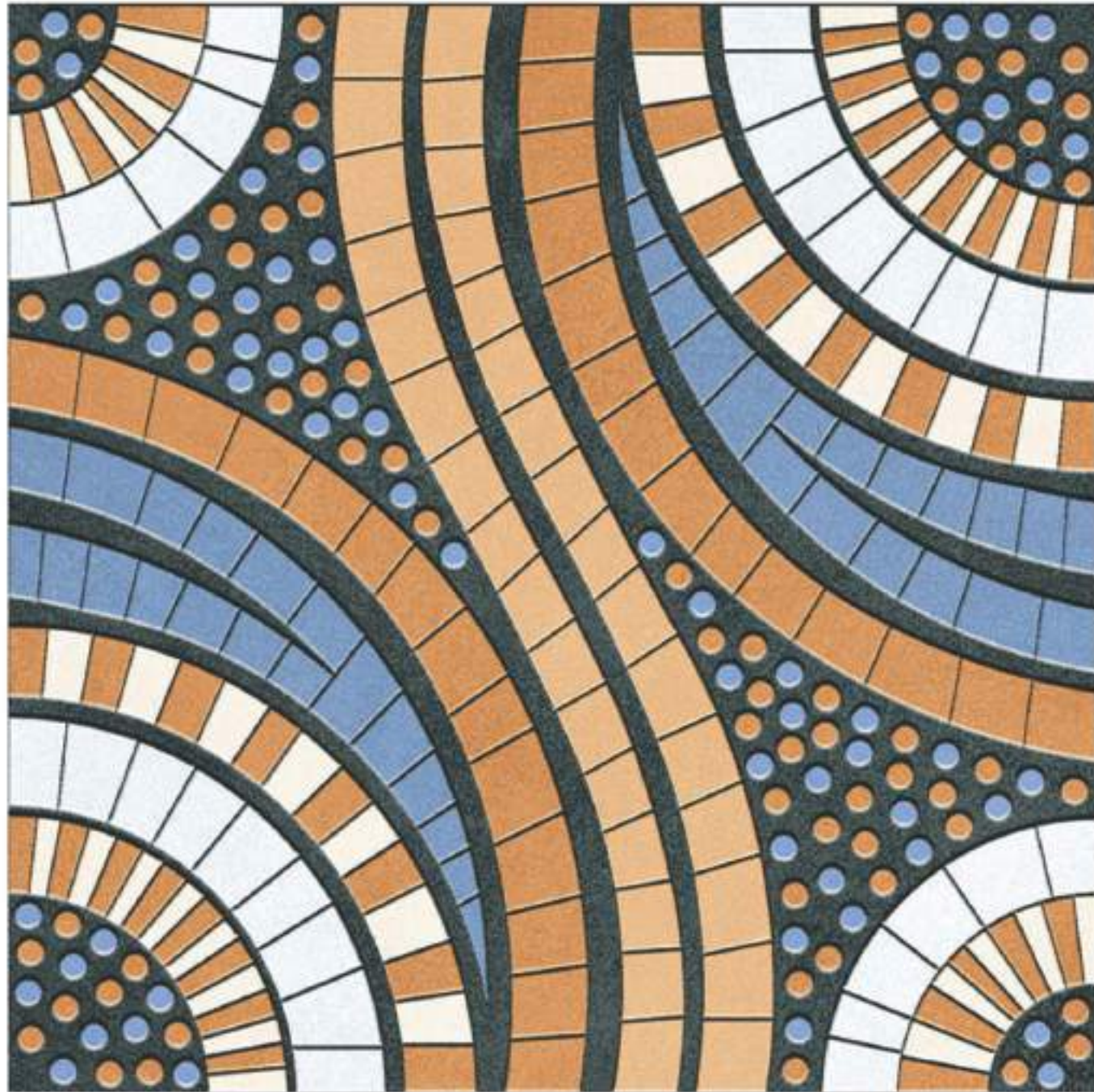
Residential Commercial Malls & Restaurants Public Area





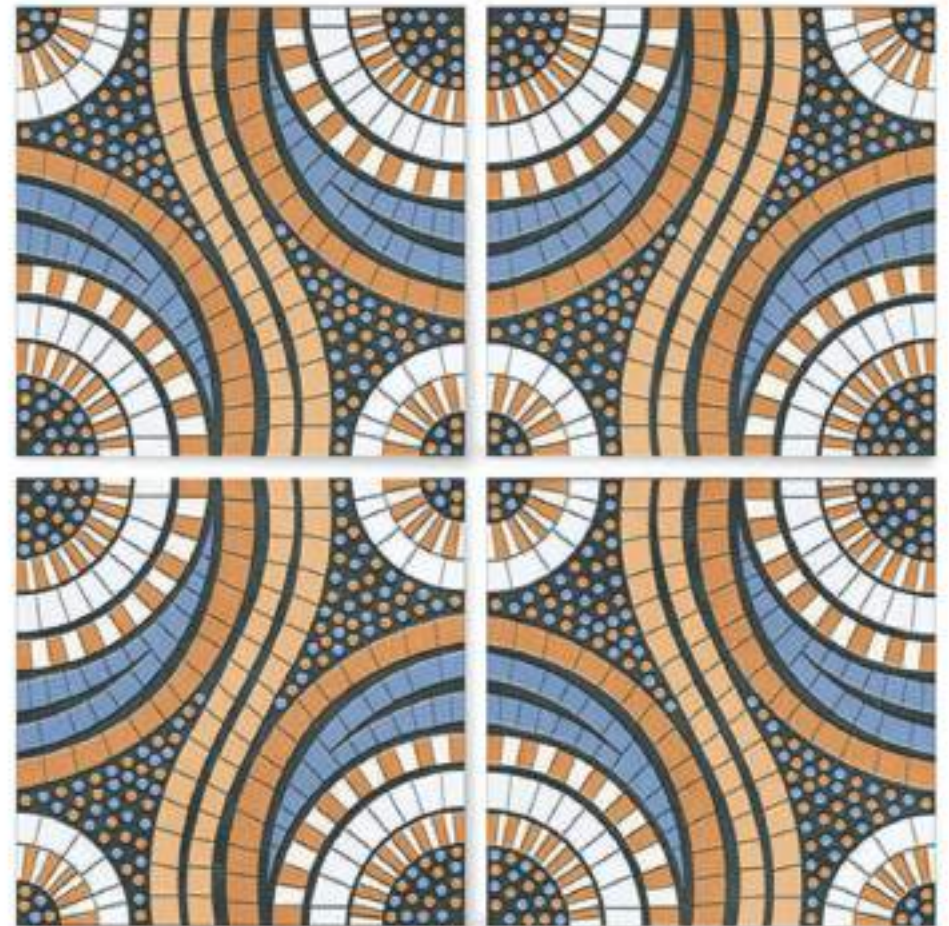
GREFFYTO

— SURFACE LLP —



59011

Size	Finish	Thickness	Random
<u>400x400 mm</u>	<u>Matt</u>	<u>12 mm</u>	<u>1</u>



Applications



Residential



Commercial



Malls & Restaurants



Public Area





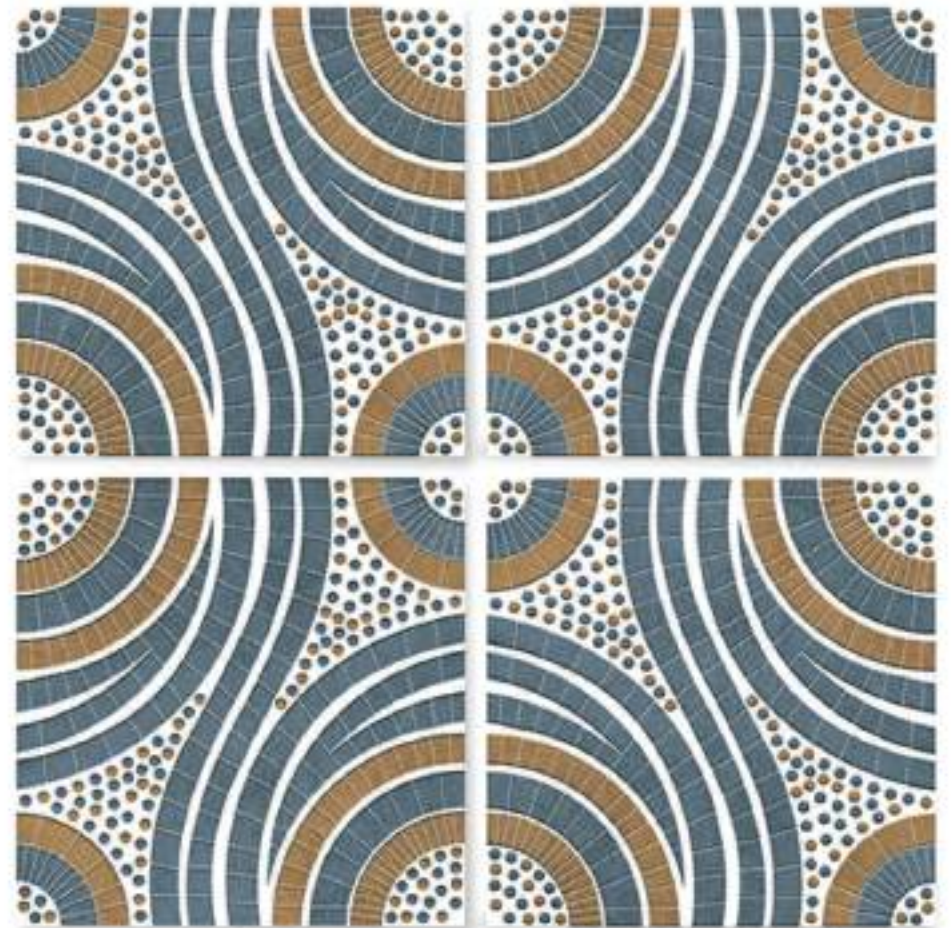
GREFFYTO

— SURFACE LLP —



59012

Size	Finish	Thickness	Random
<u>400x400 mm</u>	<u>Matt</u>	<u>12 mm</u>	<u>1</u>



Applications



Residential



Commercial



Malls & Restaurants



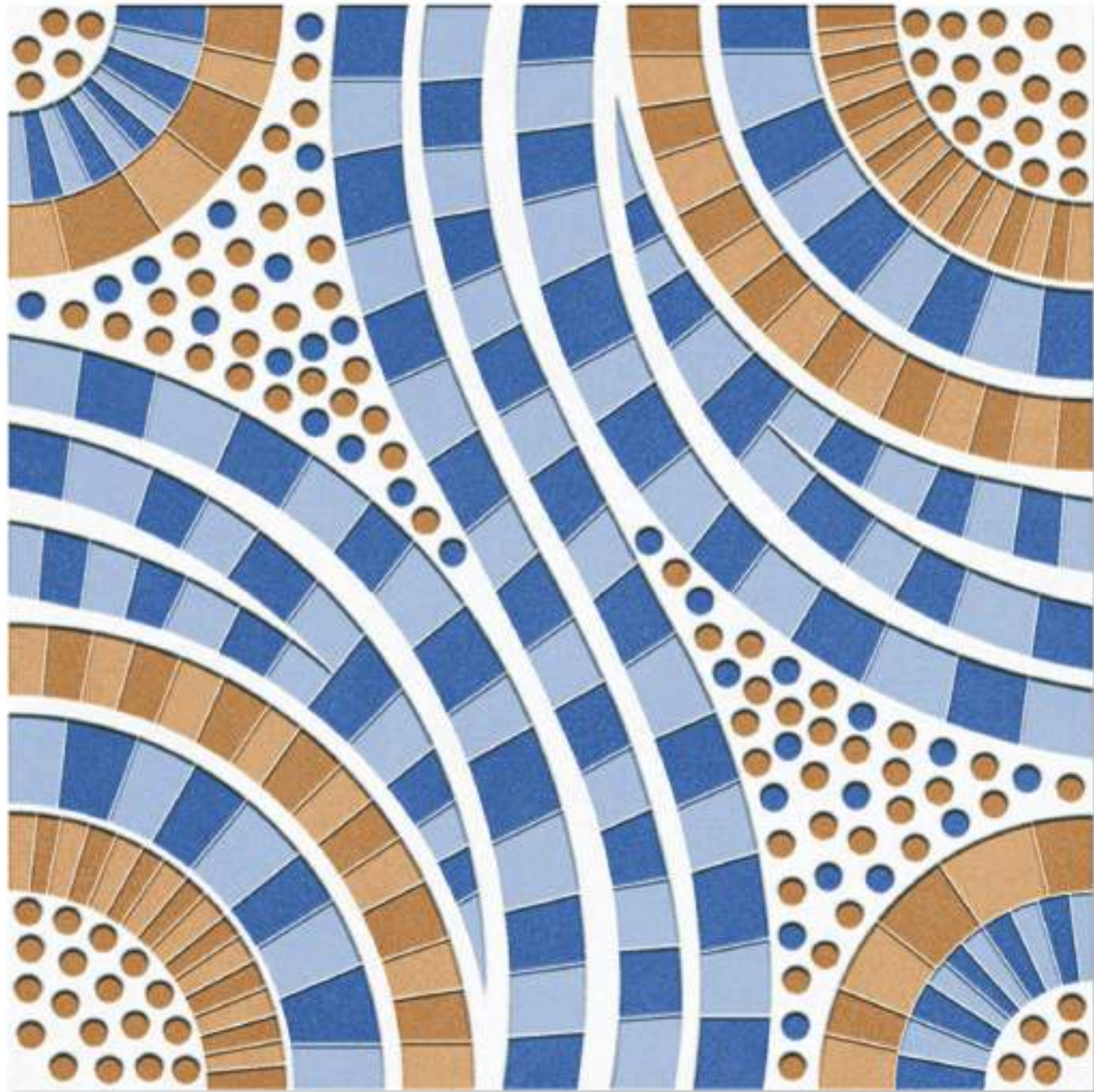
Public Area





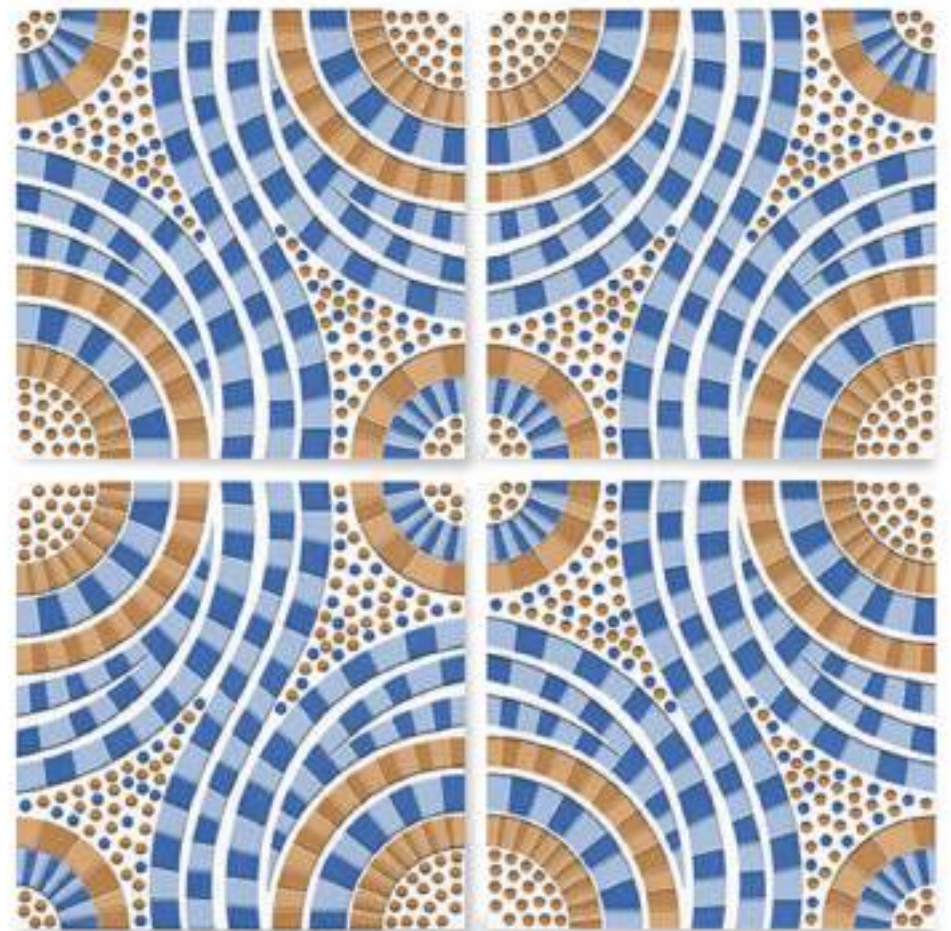
GREFFYTO

— SURFACE LLP —



59013

Size	Finish	Thickness	Random
<u>400x400 mm</u>	<u>Matt</u>	<u>12 mm</u>	<u>1</u>



Applications



Residential



Commercial



Malls & Restaurants



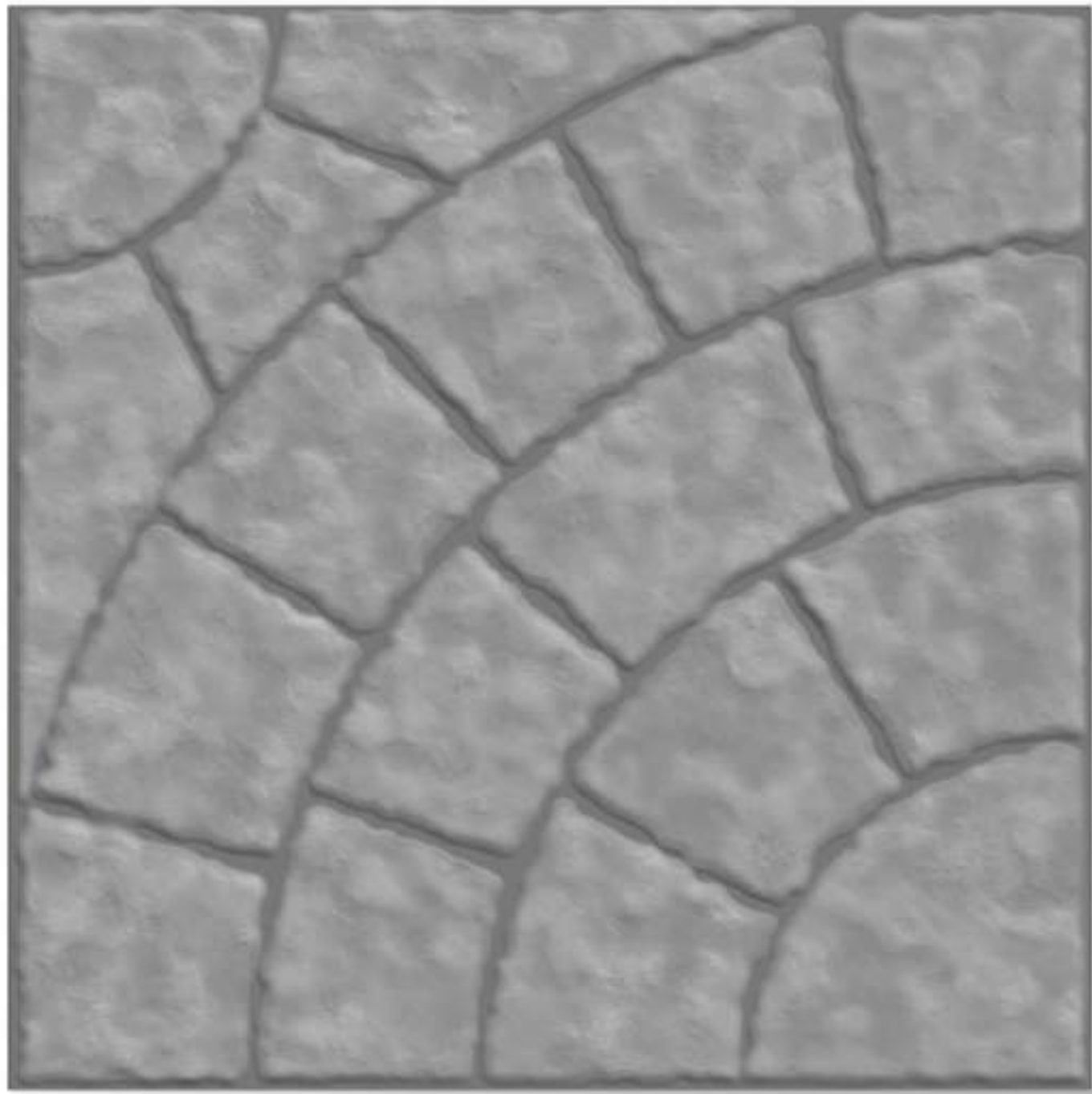
Public Area



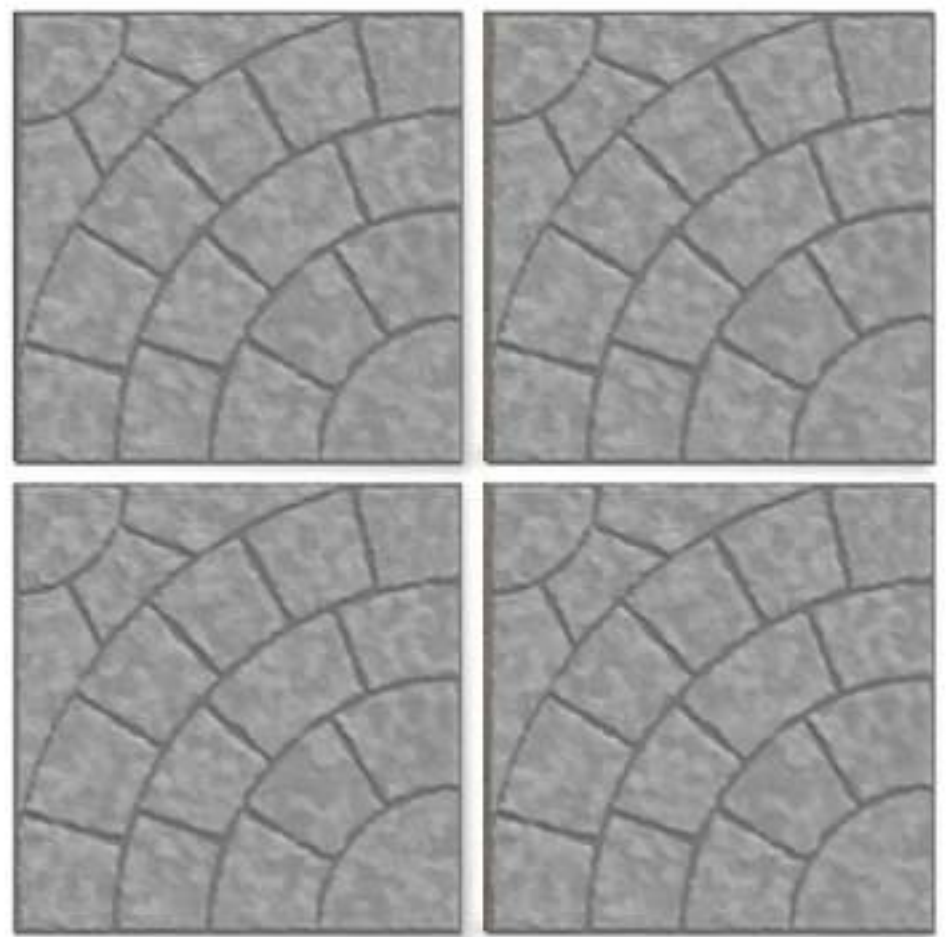


GREFFYTO

— SURFACE LLP —



Size	Finish	Thickness	Random
<u>400x400 mm</u>	<u>Matt</u>	<u>12 mm</u>	<u>1</u>



Applications

-  Residential
-  Commercial
-  Mats & Restaurants
-  Public Area

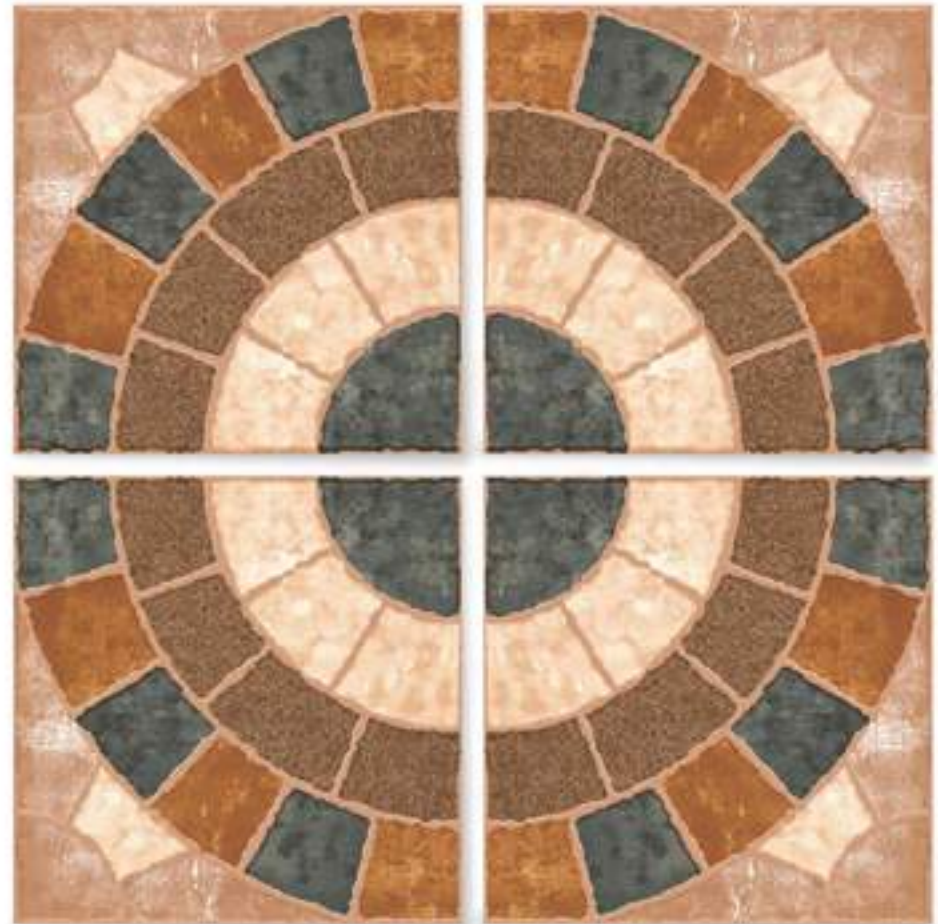


GREFFYTO
— SURFACE LLP —



2001

Size	Finish	Thickness	Random
<u>400x400 mm</u>	<u>Matt</u>	<u>12 mm</u>	<u>1</u>



Applications

-  Residence
-  Commercial
-  Malls & Restaurants
-  Public Area





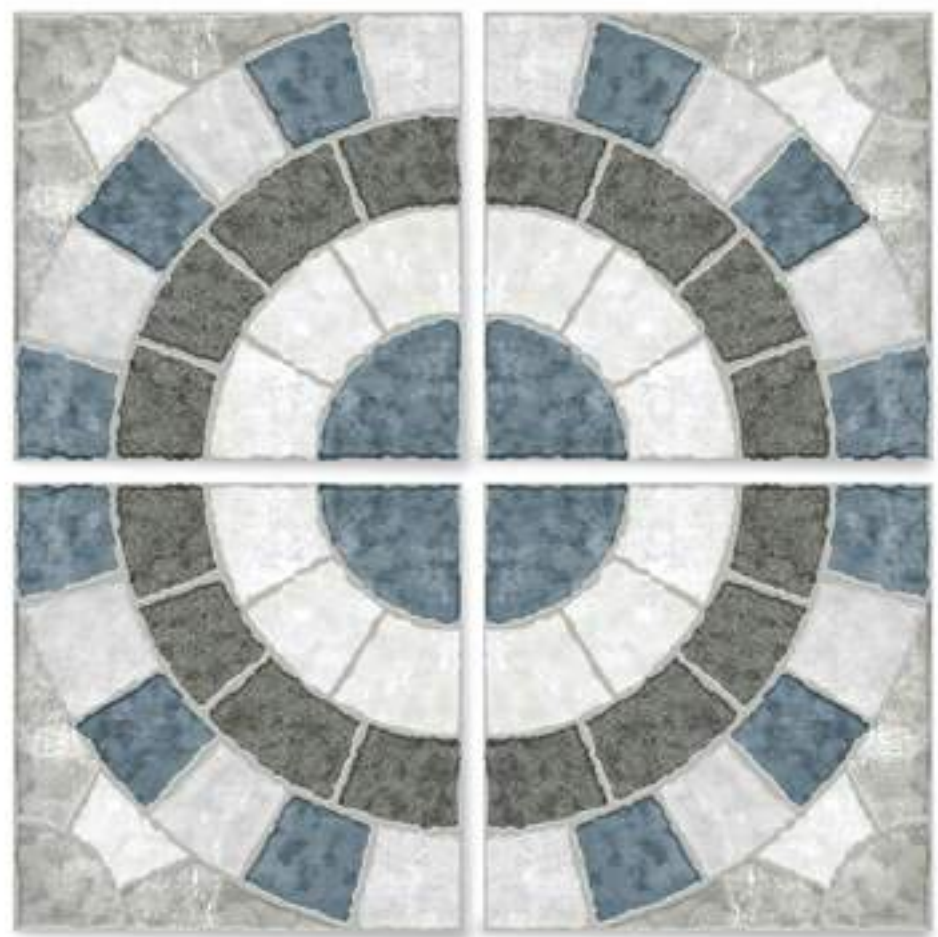
GREFFYTO

— SURFACE LLP —



2003

Size	Finish	Thickness	Random
<u>400x400 mm</u>	<u>Matt</u>	<u>12 mm</u>	<u>1</u>



Applications

-  Residence
-  Commercial
-  Malls & Restaurants
-  Public Area





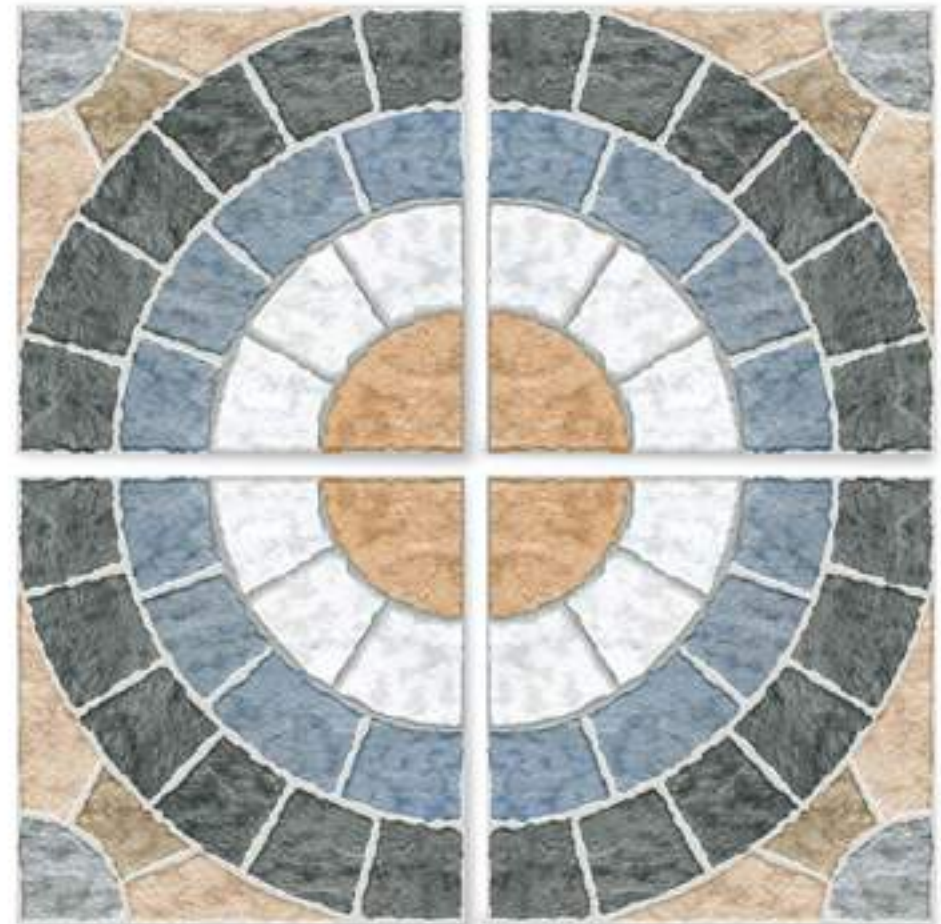
GREFFYTO

— SURFACE LLP —



2004

Size	Finish	Thickness	Random
<u>400x400 mm</u>	<u>Matt</u>	<u>12 mm</u>	<u>1</u>



Applications



Residential



Commercial



Malls & Restaurants



Public Area





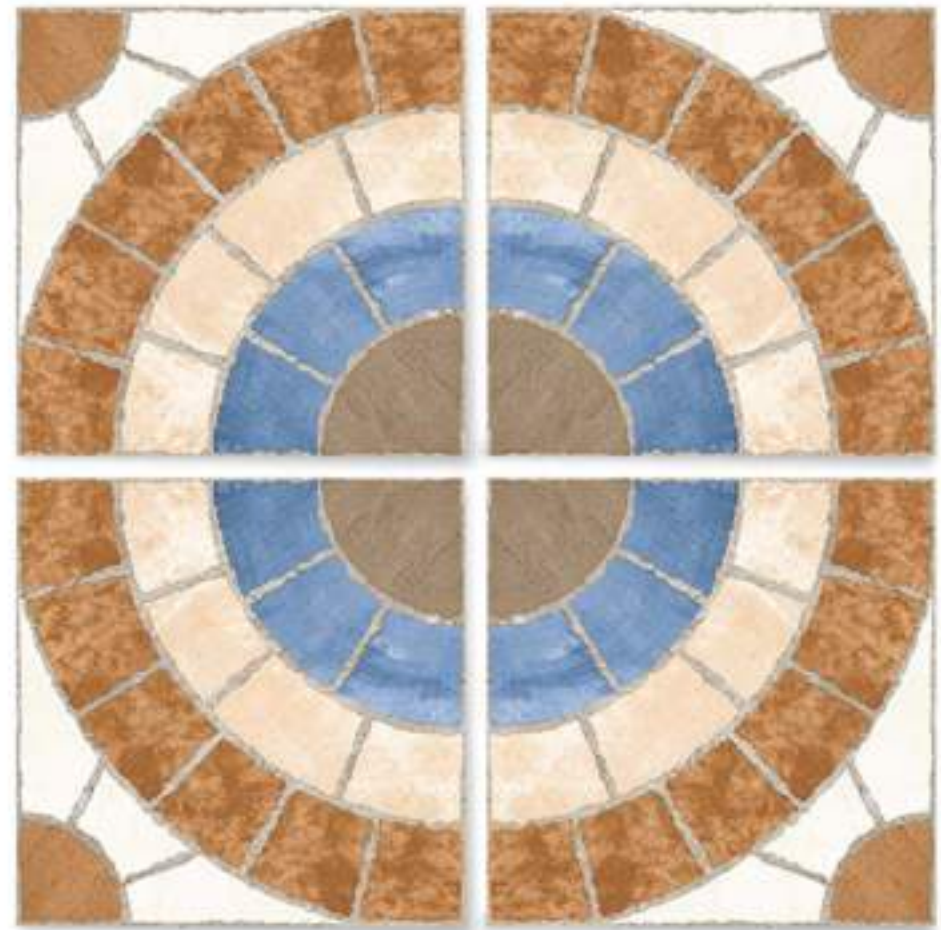
GREFFYTO

— SURFACE LLP —



2005

Size	Finish	Thickness	Random
<u>400x400 mm</u>	<u>Matt</u>	<u>12 mm</u>	<u>1</u>



Applications



Residential



Commercial



Malls & Restaurants



Public Area



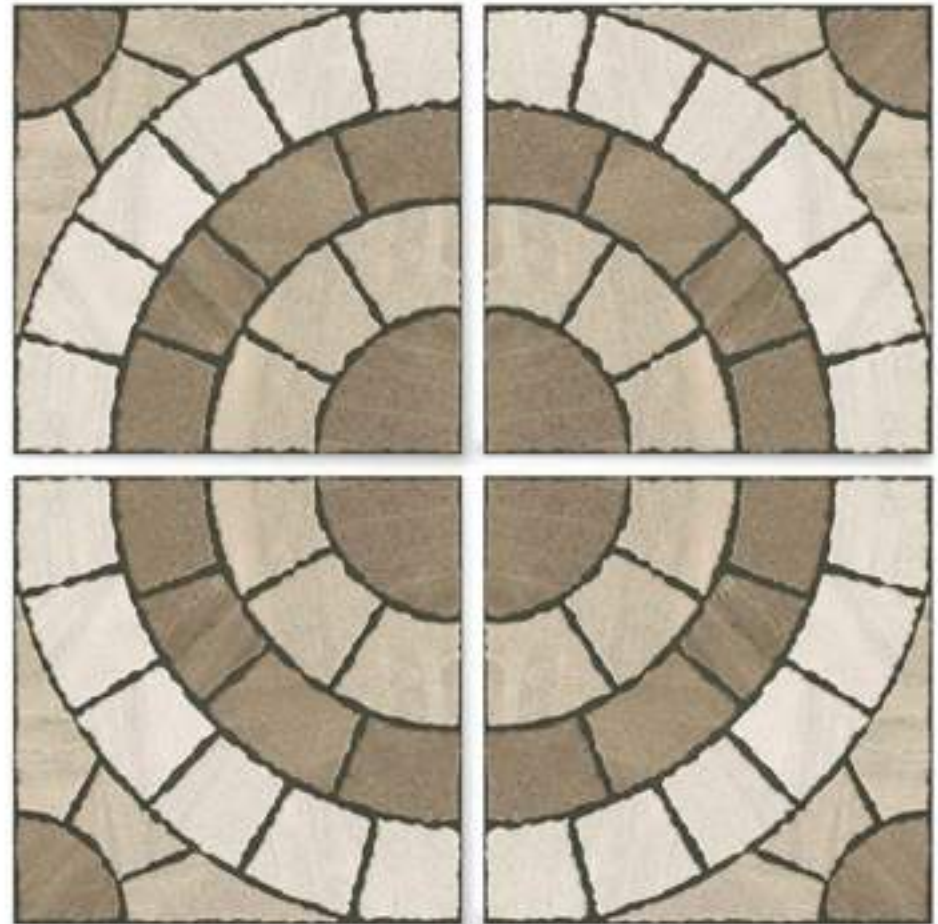


GREFFYTO
— SURFACE LLP —



2006

Size	Finish	Thickness	Random
<u>400x400 mm</u>	<u>Matt</u>	<u>12 mm</u>	<u>1</u>



Applications



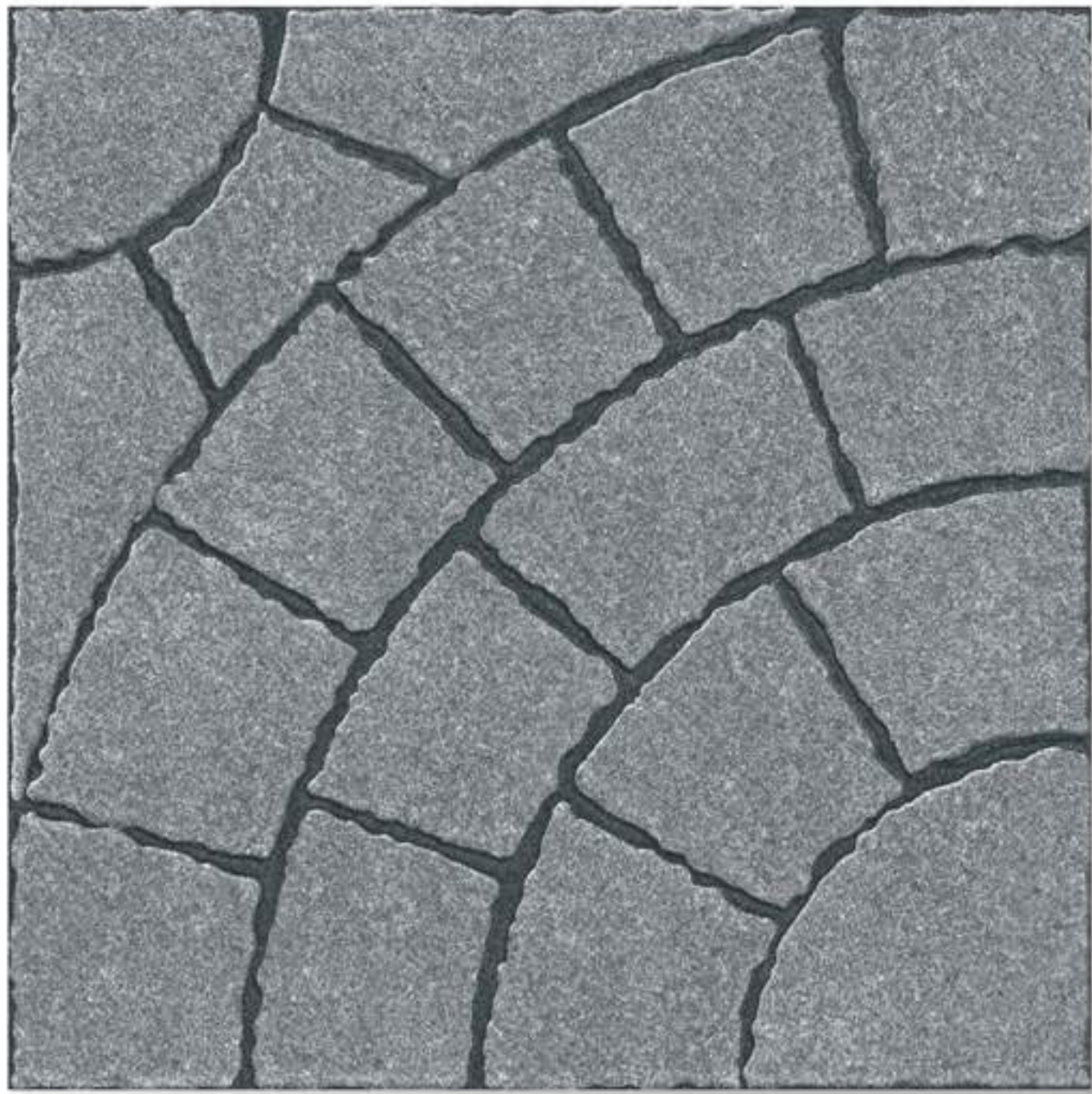
Residential Commercial Malls & Restaurants Public Area





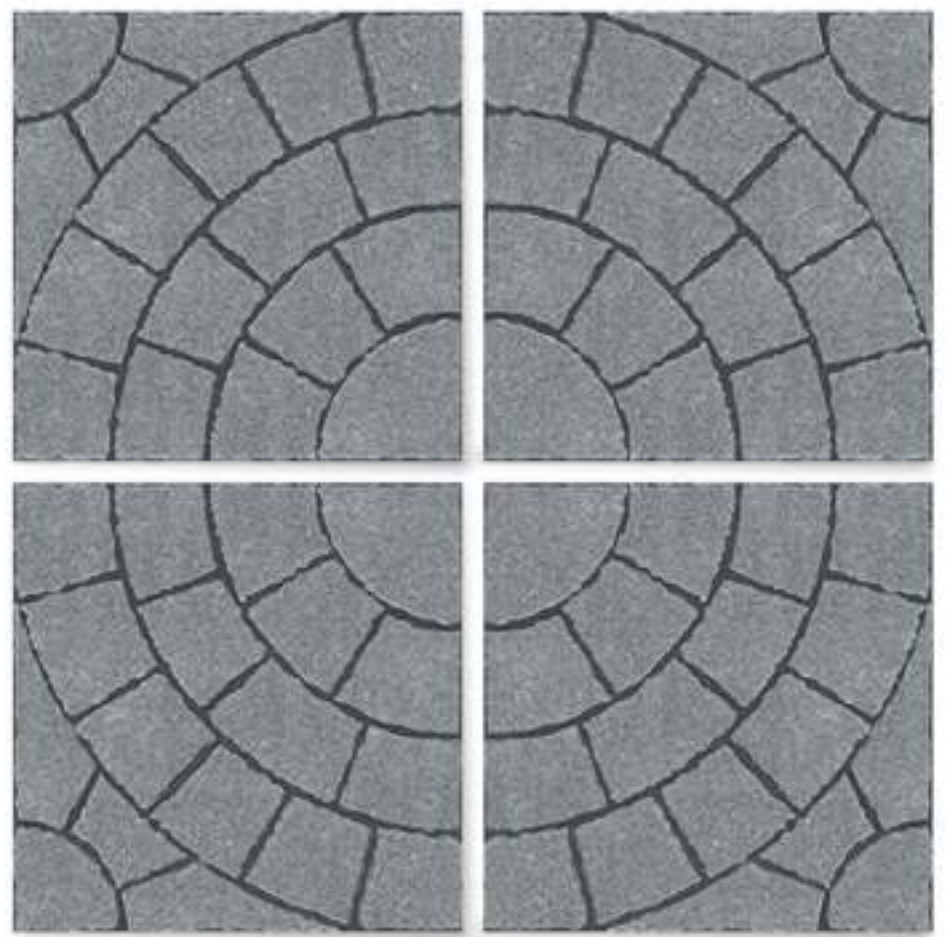
GREFFYTO

— SURFACE LLP —



2016

Size	Finish	Thickness	Random
<u>400x400 mm</u>	<u>Matt</u>	<u>12 mm</u>	<u>1</u>



Applications

-  Residence
-  Commercial
-  Malls & Restaurants
-  Public Area





GREFFYTO
— SURFACE LLP —



2020

Size	Finish	Thickness	Random
<u>400x400 mm</u>	<u>Matt</u>	<u>12 mm</u>	<u>1</u>



Applications

-  Residence
-  Commercial
-  Malls & Restaurants
-  Public Area





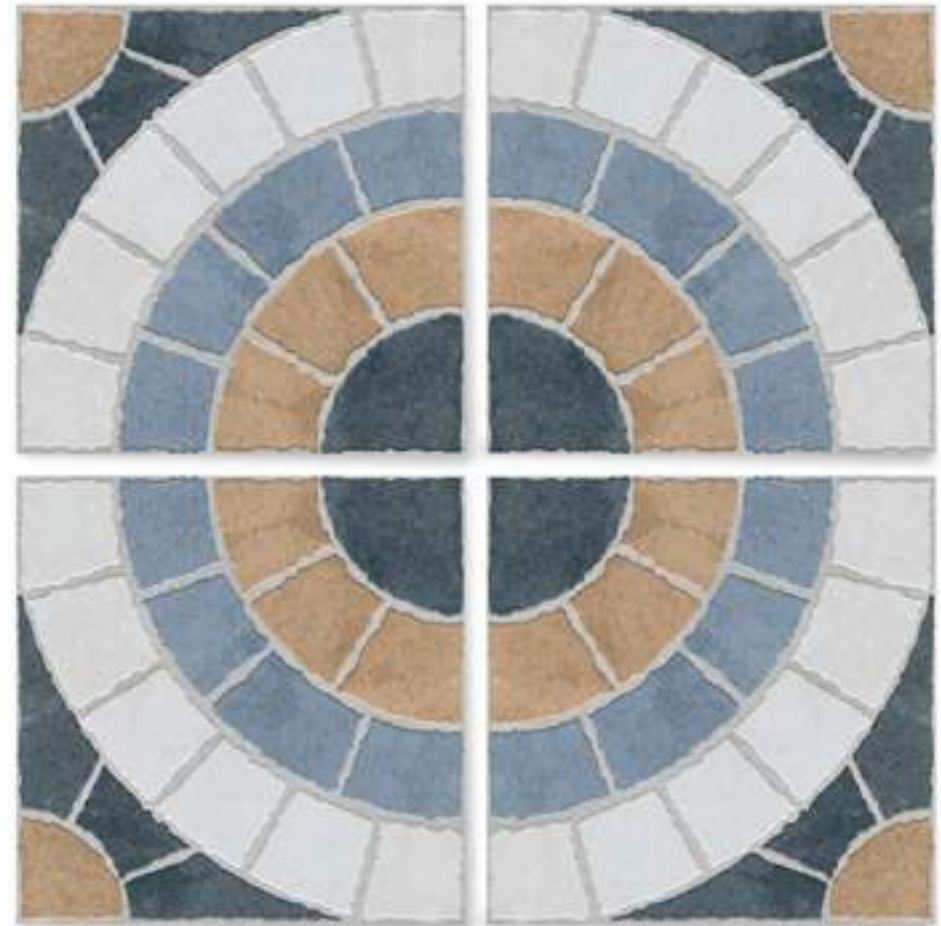
GREFFYTO

— SURFACE LLP —



2022

Size	Finish	Thickness	Random
<u>400x400 mm</u>	<u>Matt</u>	<u>12 mm</u>	<u>1</u>



Applications



Residential



Commercial



Malls & Restaurants



Public Area





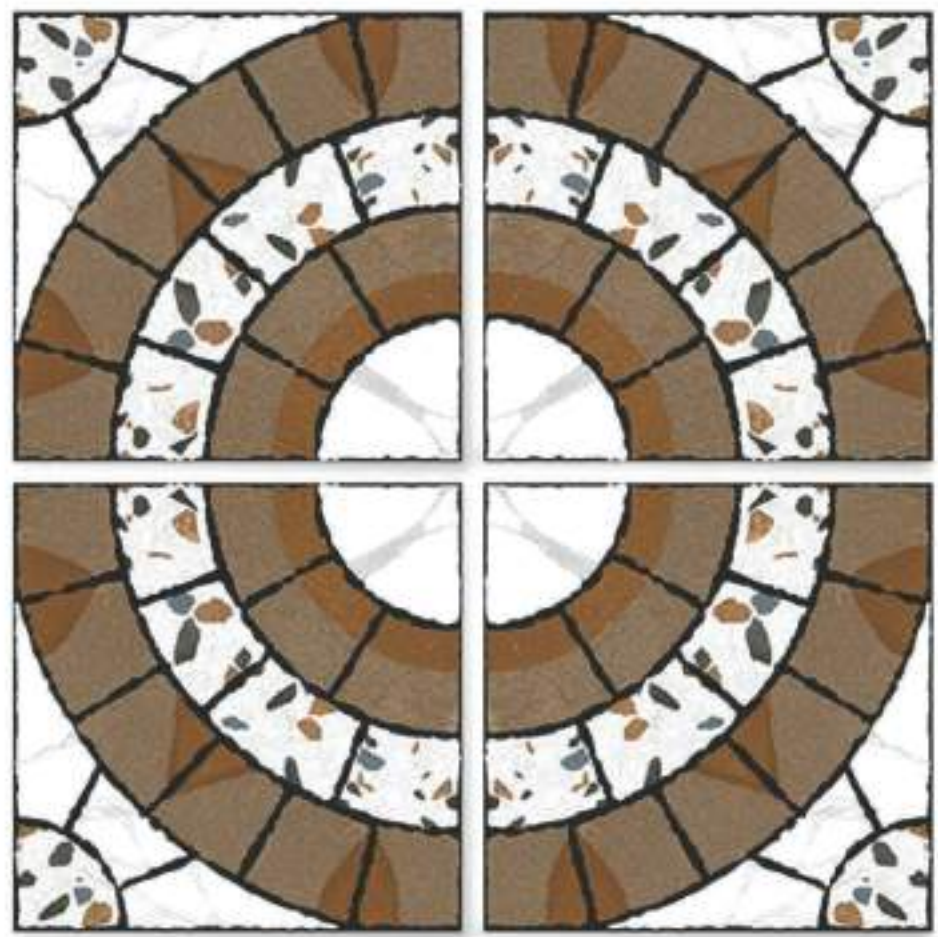
GREFFYTO

— SURFACE LLP —



2023

Size	Finish	Thickness	Random
<u>400x400 mm</u>	<u>Matt</u>	<u>12 mm</u>	<u>1</u>



Applications



Residence Commercial Malls & Restaurants Public Area

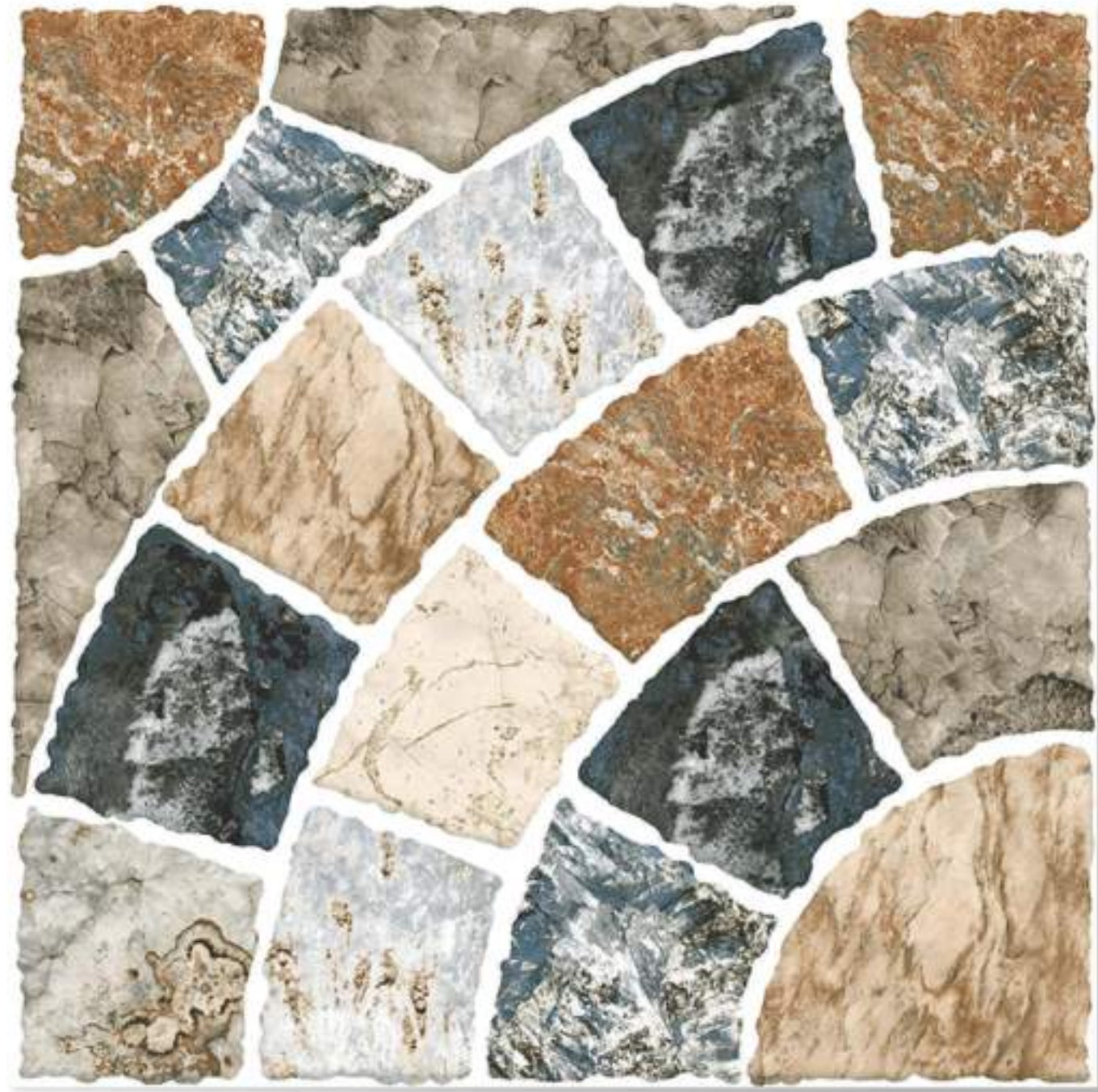




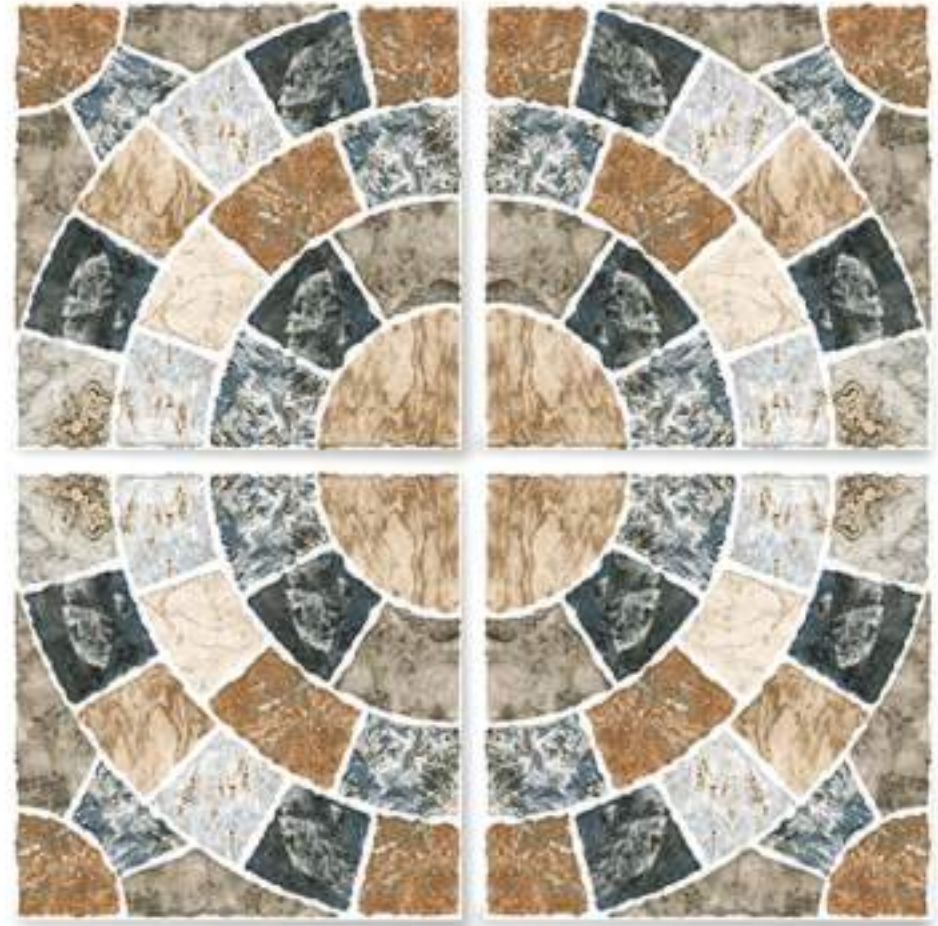
GREFFYTO
— SURFACE LLP —

NEW

2025



Size	Finish	Thickness	Random
400x400 mm	Matt	12 mm	1



Applications

-  Residence
-  Commercial
-  Mats & Restaurants
-  Public Area





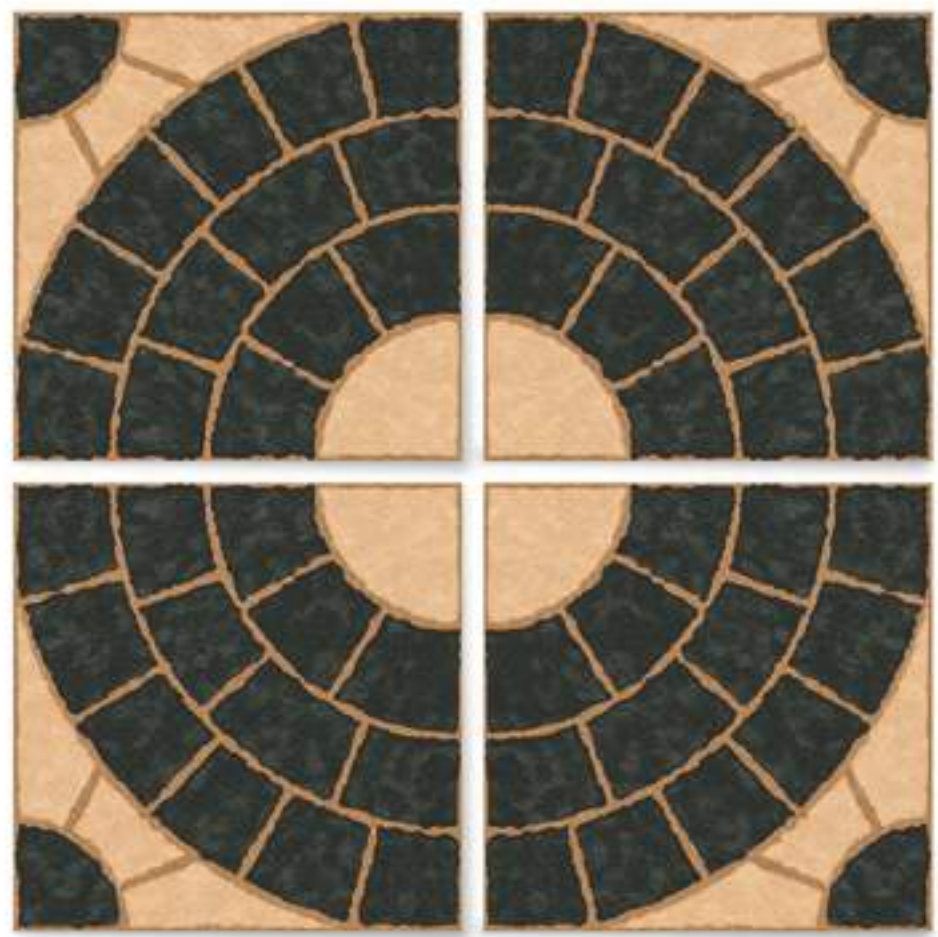
GREFFYTO

— SURFACE LLP —



2026 NEW

Size	Finish	Thickness	Random
<u>400x400 mm</u>	<u>Matt</u>	<u>12 mm</u>	<u>1</u>



Applications



Residences Commercial Malls & Restaurants Public Area





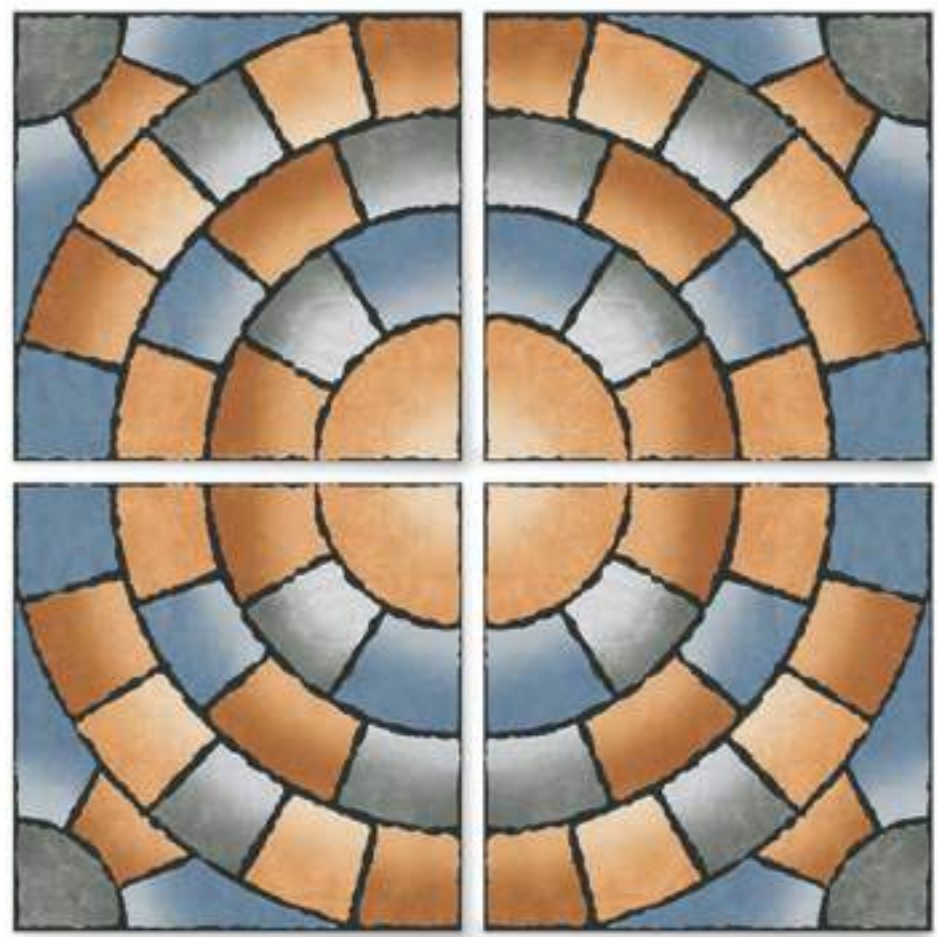
GREFFYTO

— SURFACE LLP —



2027 NEW

Size	Finish	Thickness	Random
<u>400x400 mm</u>	<u>Matt</u>	<u>12 mm</u>	<u>1</u>



Applications

-  Residence
-  Commercial
-  Mats & Restaurants
-  Public Area





GREFFYTO

— SURFACE LLP —



2028 **NEW**

Size	Finish	Thickness	Random
<u>400x400 mm</u>	<u>Matt</u>	<u>12 mm</u>	<u>1</u>



Applications

-  Residence
-  Commercial
-  Mats & Restaurants
-  Public Area





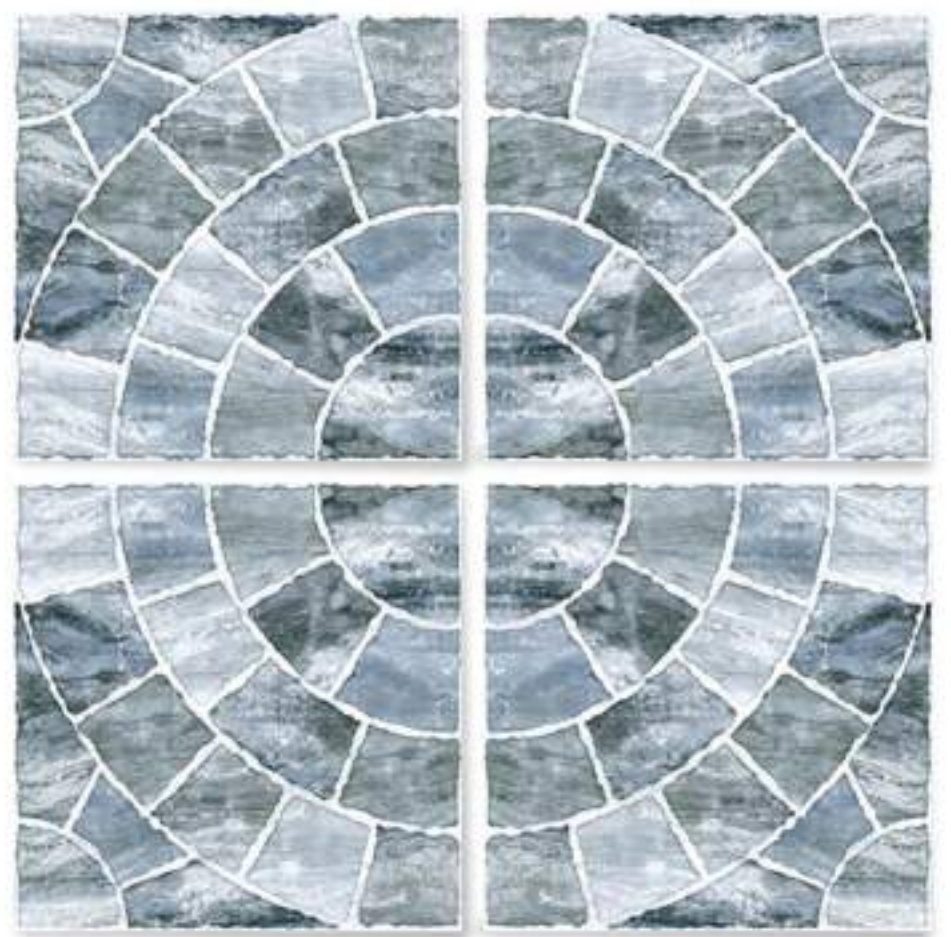
GREFFYTO

— SURFACE LLP —



2029 **NEW**

Size	Finish	Thickness	Random
<u>400x400 mm</u>	<u>Matt</u>	<u>12 mm</u>	<u>1</u>



Applications

-  Residence
-  Commercial
-  Mats & Restaurants
-  Public Area





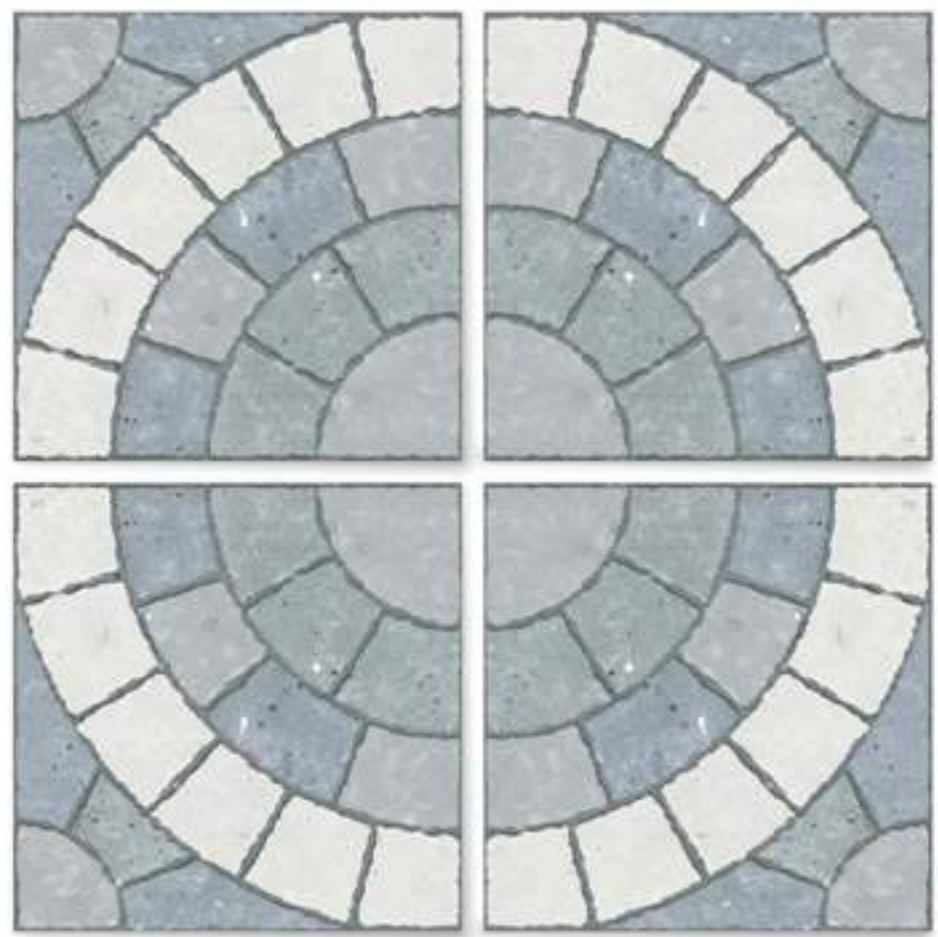
GREFFYTO

— SURFACE LLP —



2030 **NEW**

Size	Finish	Thickness	Random
<u>400x400 mm</u>	<u>Matt</u>	<u>12 mm</u>	<u>1</u>



Applications



Residence Commercial Mall & Restaurants Public Area





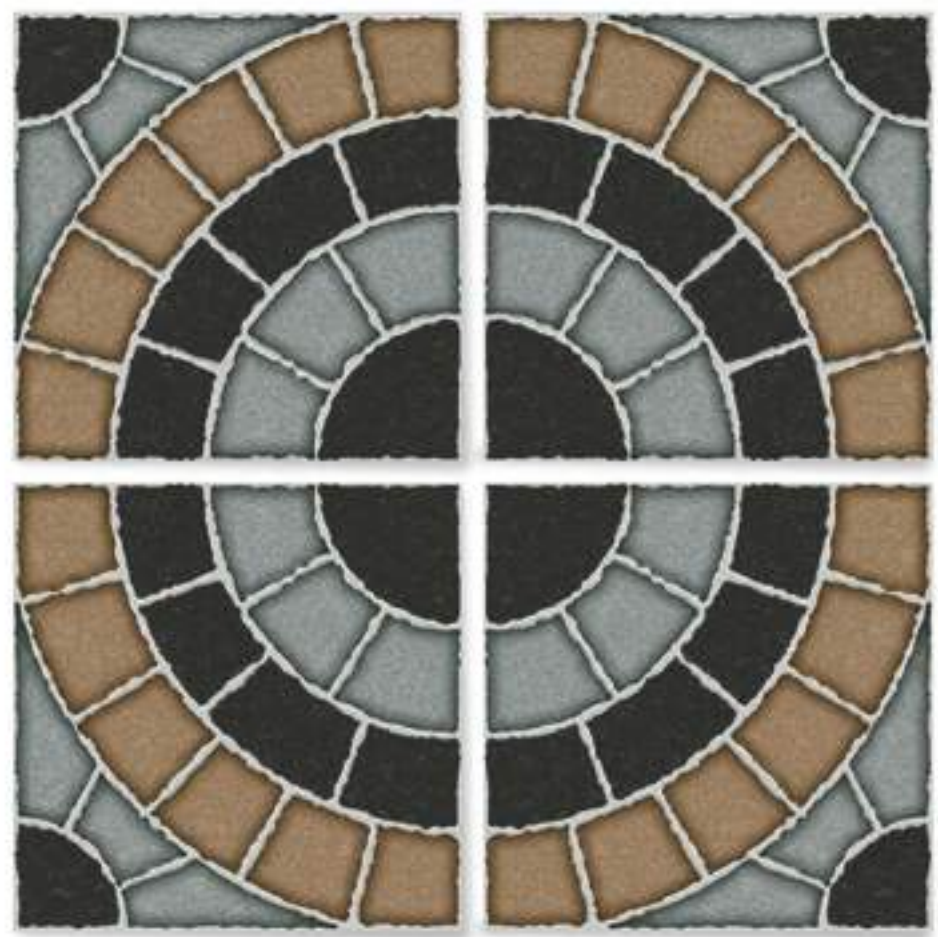
GREFFYTO

— SURFACE LLP —



2031 NEW

Size	Finish	Thickness	Random
<u>400x400 mm</u>	<u>Matt</u>	<u>12 mm</u>	<u>1</u>



Applications

-  Residence
-  Commercial
-  Mats & Restaurants
-  Public Area





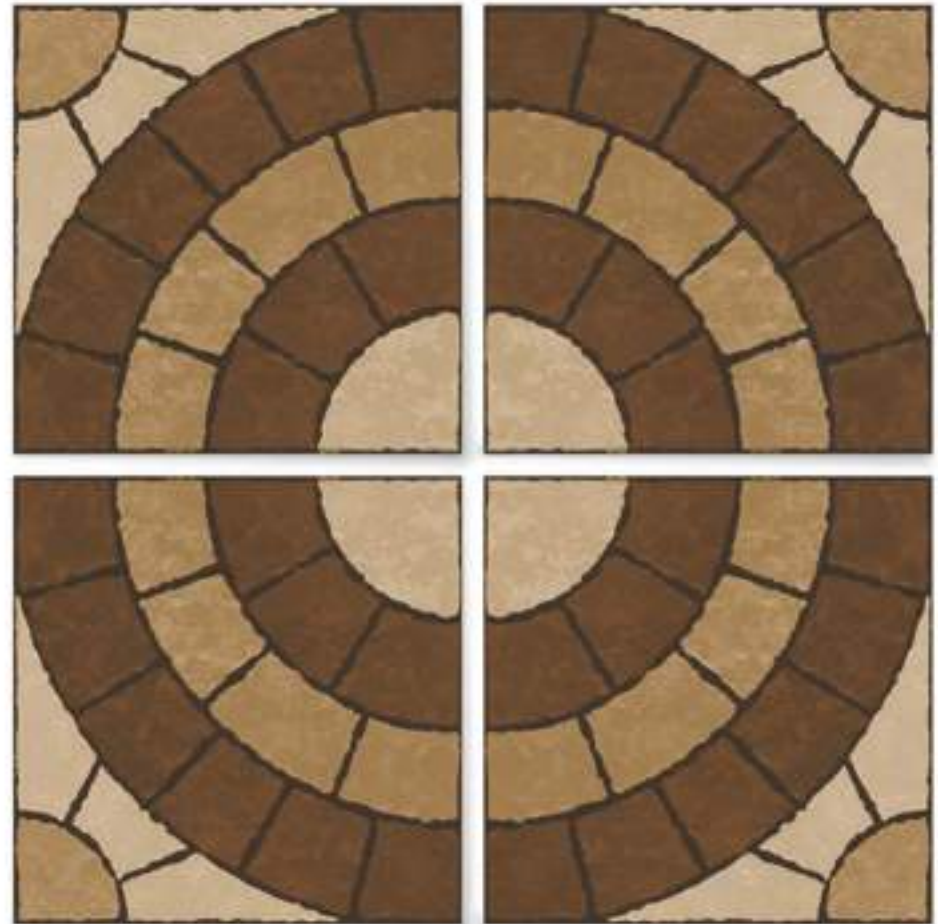
GREFFYTO

— SURFACE LLP —



2032 **NEW**

Size	Finish	Thickness	Random
<u>400x400 mm</u>	<u>Matt</u>	<u>12 mm</u>	<u>1</u>



Applications

-  Residence
-  Commercial
-  Mats & Restaurants
-  Public Area





GREFFYTO

— SURFACE LLP —



2024 **NEW**

Size	Finish	Thickness	Random
<u>400x400 mm</u>	<u>Matt</u>	<u>12 mm</u>	<u>1</u>



Applications

-  Residence
-  Commercial
-  Malls & Restaurants
-  Public Area





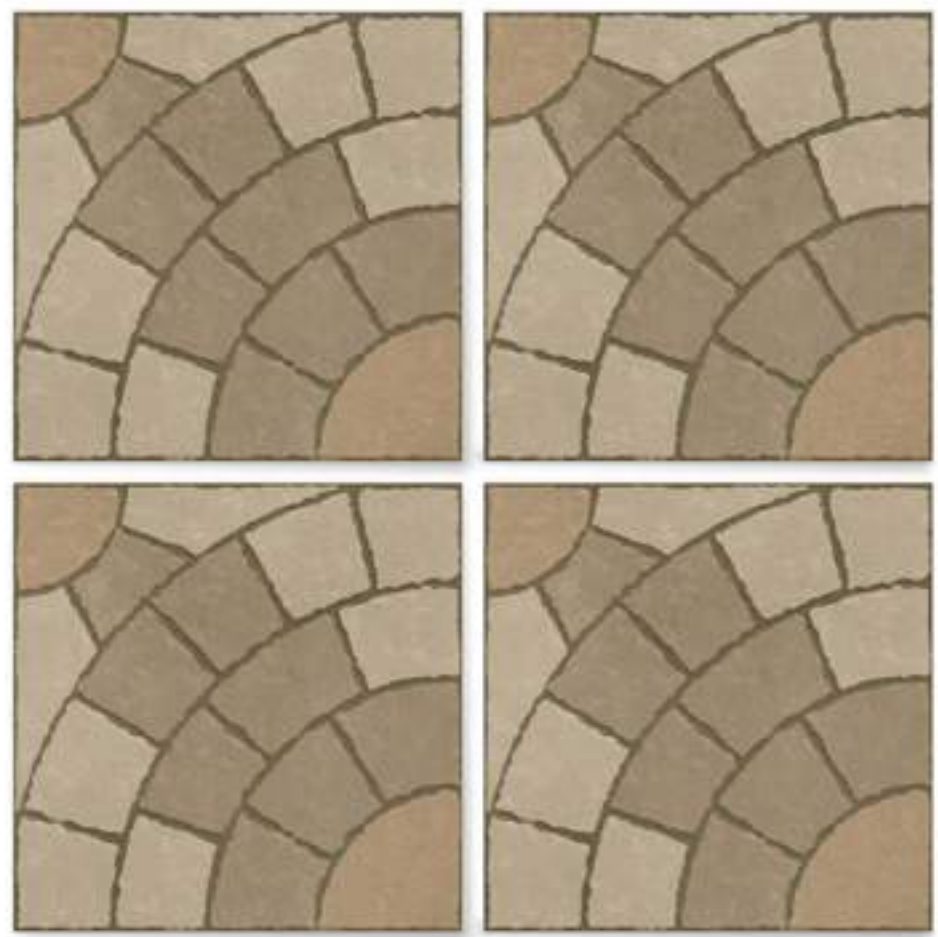
GREFFYTO

— SURFACE LLP —



2034 **NEW**

Size	Finish	Thickness	Random
<u>400x400 mm</u>	<u>Matt</u>	<u>12 mm</u>	<u>1</u>



Applications



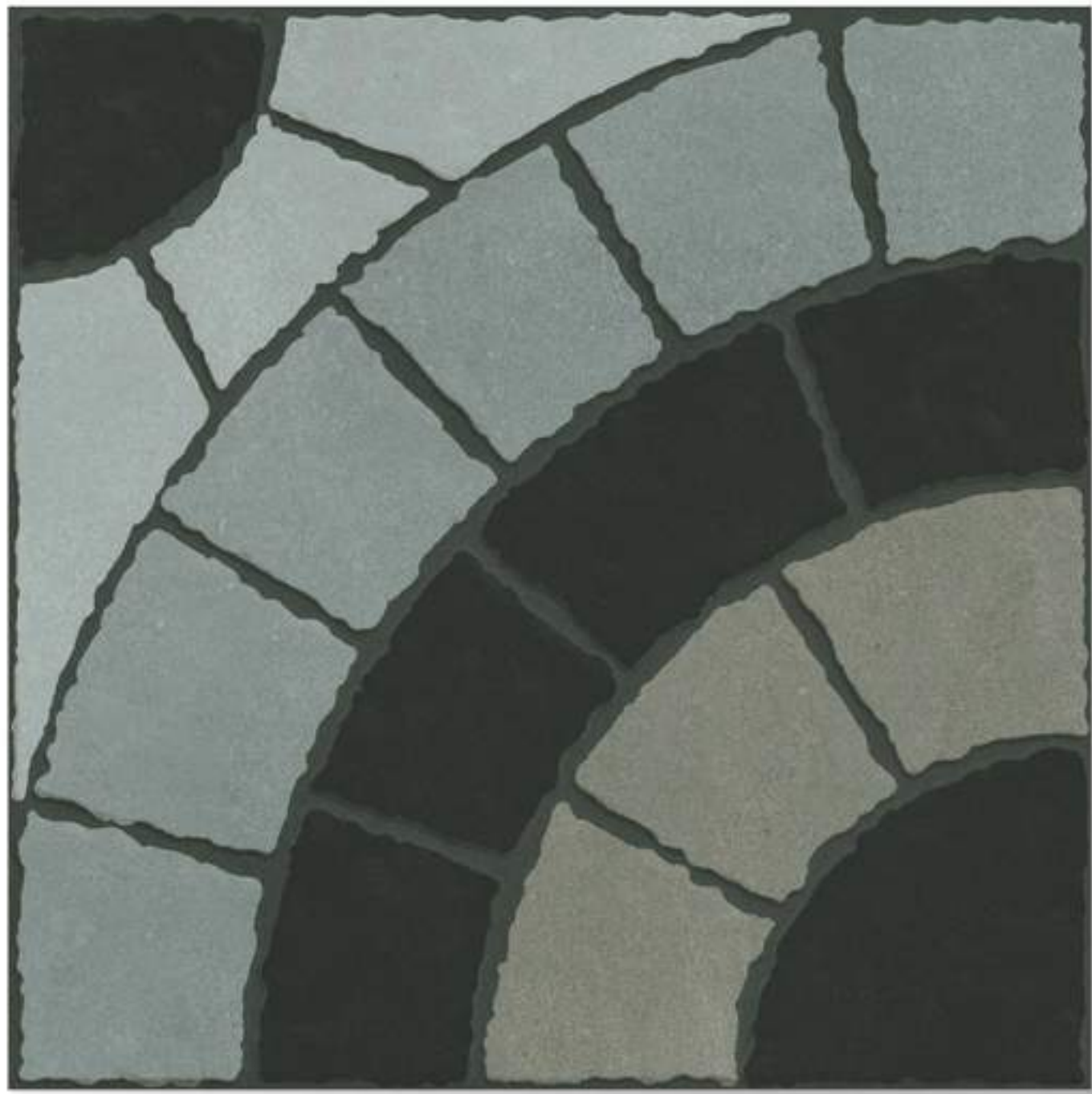
Residences Commercial Malls & Restaurants Public Area





GREFFYTO

— SURFACE LLP —



2035 **NEW**

Size	Finish	Thickness	Random
<u>400x400 mm</u>	<u>Matt</u>	<u>12 mm</u>	<u>1</u>



Applications



Residential Commercial Malls & Restaurants Public Area



GREFFYTO

— SURFACE LLP —



TECHNICAL SPECIFICATION

CHARACTERISTIC	International Std. ISO13006/EN 176 Group Bla	Tiles Value	Method of Testing
1. Deviation in Length	±0.6%	±0.1%	EN 98
2. Deviation in Thickness	±5%	±4%	EN 98
3. Straightness of Sides	±0.5%	±0.1%	EN 98
4. Rectangularity	±0.6%	±0.2%	EN 98
5. Surface Flatness	±0.5%	±0.3%	EN 98
6. Water Absorption *	<0.5%	<0.3%	EN 99
7. Mohs Hardness *	> 6	> 7	EN 101
8. Flexural Straightness *	> 27 N/mm ²	> 47 N/mm ²	EN 100
9. Abrasion Resistance	< 204 mm ³	< 98 mm ³	EN 102
10. Skid Resistance (Friction Coefficient)	> 0.4	> 0.6	ASTM C-1028
11. Breaking Strength *	> 1113 N	> 2830 N	ASTM C-648
12. Density (g/cc)	> 2	> 2.4	DIN 51082
13. Frost Resistance	Frost proof	Frost proof	EN 202
14. Chemical Resistance	No damage	No damage	EN 106
15. Thermal Shock Resistance	No damage	No damage	EN 104
16. Colour Resistance	No damage	No damage	DIN 51094
17. Thermal Expansion	< 9 x 10 ⁻⁶	< 6 x 10 ⁻⁶	EN 103
18. Stain Resistance	Resistant	Resistant	ISO 10545-14
19. Moisture Expansion	Nil	Nil	ISO 10545-10
20. Glossiness	—	Min. 65% - 70% reflection	Glossmeter

Sr.no.	Size	Thickness (Approx)	Tiles Per Box (Approx)	Coverage Area (sq.mtr) (Approx)	Weight (Approx)
1.	DIGITAL 400X400MM	12 MM	5 PCS	0.8	18 Kgs
1.	DIGITAL 400X400MM	10 MM	5 PCS	0.8	16 Kgs



GREFFYTO

— SURFACE LLP —

THANK YOU